

BEAD Program: A Framework to Allocate Funding for Broadband Availability

State Broadband Report: Oklahoma

January 2024



1 Eligible Locations

How many unserved/underserved locations are eligible for BEAD funding?

15%

251K LOCATIONS

OF OKLAHOMA LOCATIONS LACK HIGH-SPEED BROADBAND IN JUN 2023

VS. 9% STATE/TERRITORY AVERAGE

UNSERVED LOCATIONS, JUN. 2024



62.9K
LOCATIONS

Are estimated to lack broadband access at **25/3 Mbps**

UNDERSERVED LOCATIONS, JUN. 2024



58.3K
LOCATIONS

Are estimated to lack broadband access at **100/20 Mbps**

These locations are primarily in rural areas and are eligible for BEAD funding to deploy broadband service.

2 Total Funding

How much capital funding is the State/Territory estimated to have?

\$797M

IN BEAD FUNDING HAS BEEN ALLOCATED TO OKLAHOMA
VS. \$743M STATE/TERRITORY AVERAGE

ESTIMATED BEAD FUNDING:

BEAD Funds allocated by NTIA

\$797M

Estimated Provider Match

\$358M

Estimated Total Capital

\$1.2B

The provider match is estimated using a high-level service provider business case. See national summary deck for full details.

3 Deployment

How many locations can be covered with fiber and other technologies?

\$416M-\$797M

OF BEAD FUNDS IS REQUIRED TO BUILD HIGH-SPEED BROADBAND TO ALL ELIGIBLE LOCATIONS

DEPLOYMENT SCENARIOS:



Baseline Fiber



Maximum Fiber

100%
LOCATIONS REACHED

58%
FIBER LOCATIONS

100%
LOCATIONS REACHED

86%
FIBER LOCATIONS

\$775M

TOTAL CAPITAL COST

\$1.2B

TOTAL CAPITAL COST

\$381M

REMAINING BUDGET

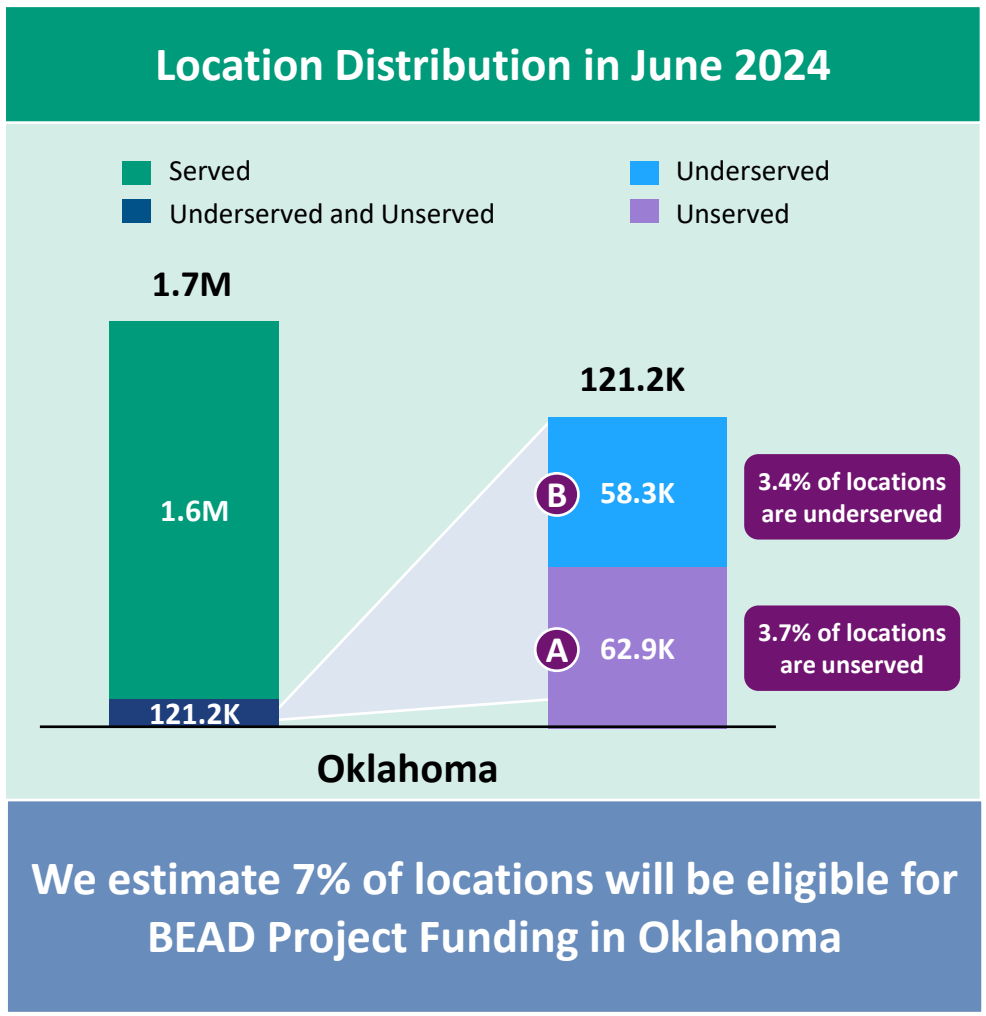
\$--M

REMAINING BUDGET

1 Estimate Eligible Locations

Oklahoma | Estimated Eligible Locations for BEAD Projects

| June 2023 FCC Broadband Locations | Unserved <i>(less than 25Mbps/3Mbps)</i> | Underserved <i>(less than 100Mbps/20Mbps)</i> |
|--|---|---|
| Subsidy Program Funded Locations ¹ | 73.3K | 47.5K |
| Incremental Build ² <i>(13% annual build, for 12 months)</i> | 9.4K | -- |
| Jun. 2024 Estimated Eligible Locations | 62.9K A | 58.3K B |

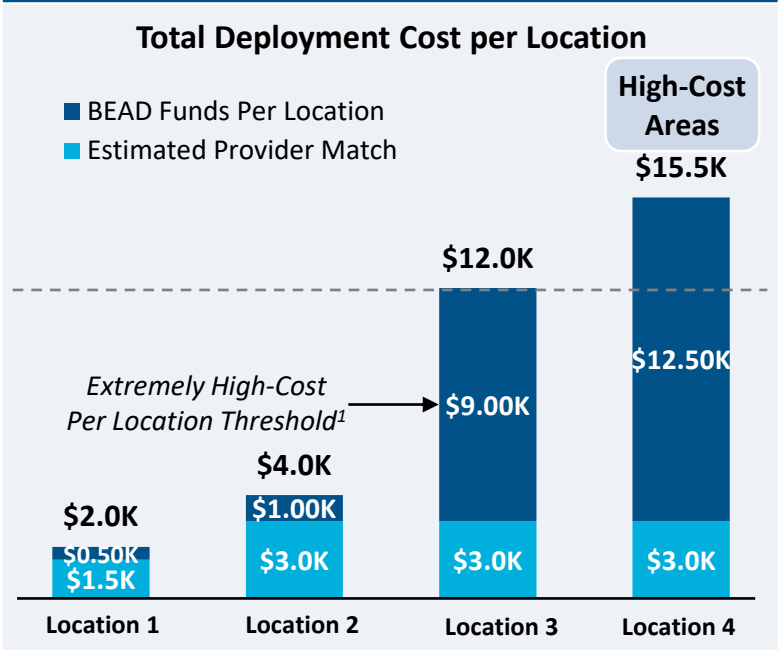


1. Locations with "commitments" to receive support from federal subsidy programs
 2. Given the uncertainty around the magnitude of locations moving from unserved to underserved, we have not made incremental builds adjustments to underserved locations
 BEAD eligible locations does not account for state-specific eligibility rules set forth in Initial Proposals
 Source: Cartesian, FCC National Broadband Map (June 2023 data, released in November 2023)
 Confidential and Proprietary — Copyright © 2024 Cartesian, Inc. All rights reserved.

2 Calculate BEAD Funding

Oklahoma | BEAD Funding & Estimated Provider Match

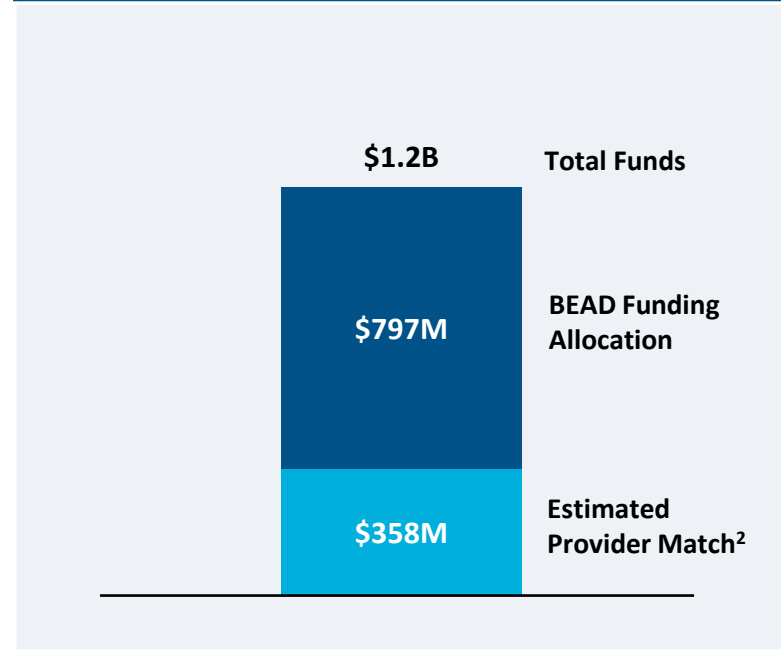
Provider Match Examples



| Provider Match % | | | |
|------------------|-----|-----|-----|
| 75% | 75% | 25% | 19% |

To be conservative, we assume provider match amounts have a maximum of 75% and a minimum of 25%, except in high-cost areas

Total Capital Available - Oklahoma



\$1.2B in total capital is estimated to be available to serve unserved/underserved Oklahoma locations (combining BEAD funding and estimated provider match)

Provider Match - Oklahoma

Total Estimated Provider Match: \$358M

Total Estimated Eligible Locations: 121.2K

Average Provider Match: \$2,955 PER LOCATION

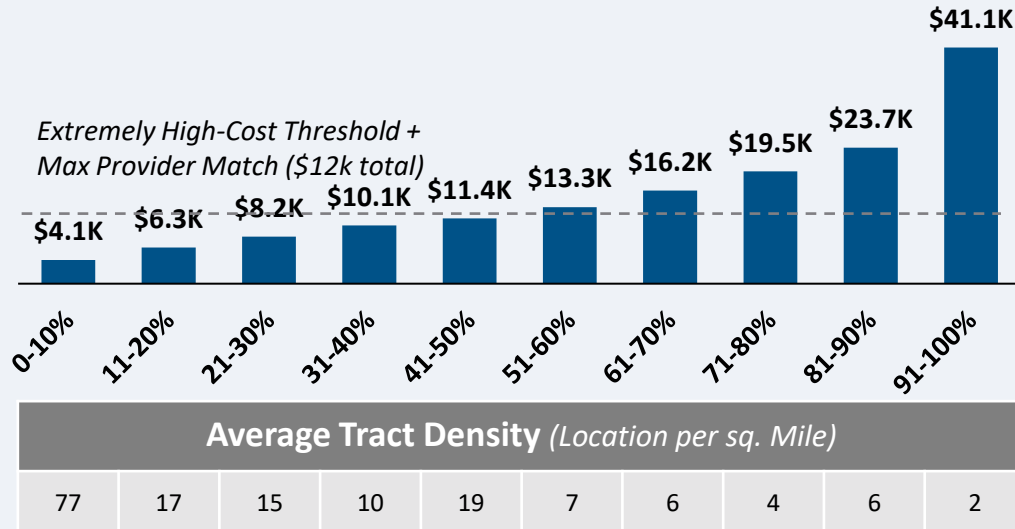
We estimate the average provider match will be \$2,955 – provider matches will be 75% where cost to deploy is less than \$4K

1. The model uses a \$9k threshold, however, States/Territories will individually need to determine their appropriate extremely high-cost threshold
 2. In reality, providers will determine the viable level of match funding for each project using a business case model. They will be willing to contribute a greater match in some locations and less in others. Locations which are hardest to serve may need to be fully funded by BEAD with no match. Competitive bidding should drive provider matches towards this level.
 Source: Cartesian, FCC National Broadband Map (June 2023 data, released in November 2023), Benton, NTIA
 Confidential and Proprietary — Copyright © 2024 Cartesian, Inc. All rights reserved.

CAPEX Fiber Deployment Cost per Location Segmented by Cost Deciles¹

Unserviced Locations

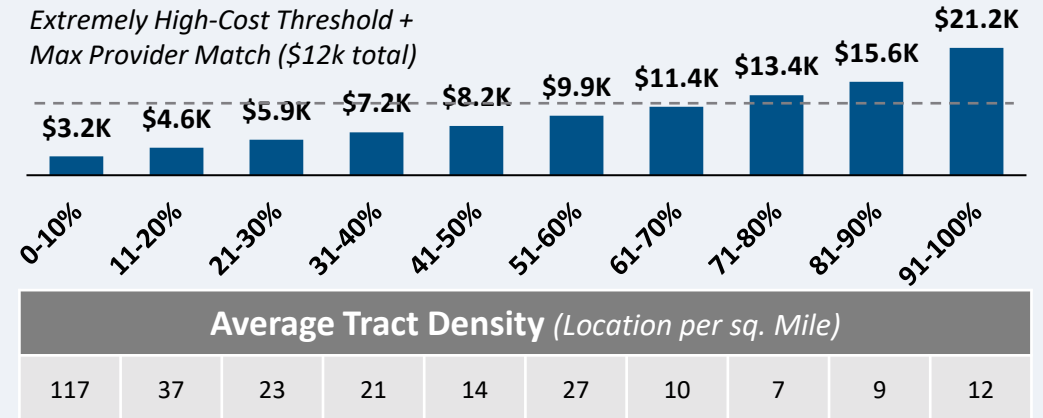
Overall Average Cost per Location: \$15,659



62.9K Locations

Underserved Locations

Overall Average Cost per Location: \$10,103

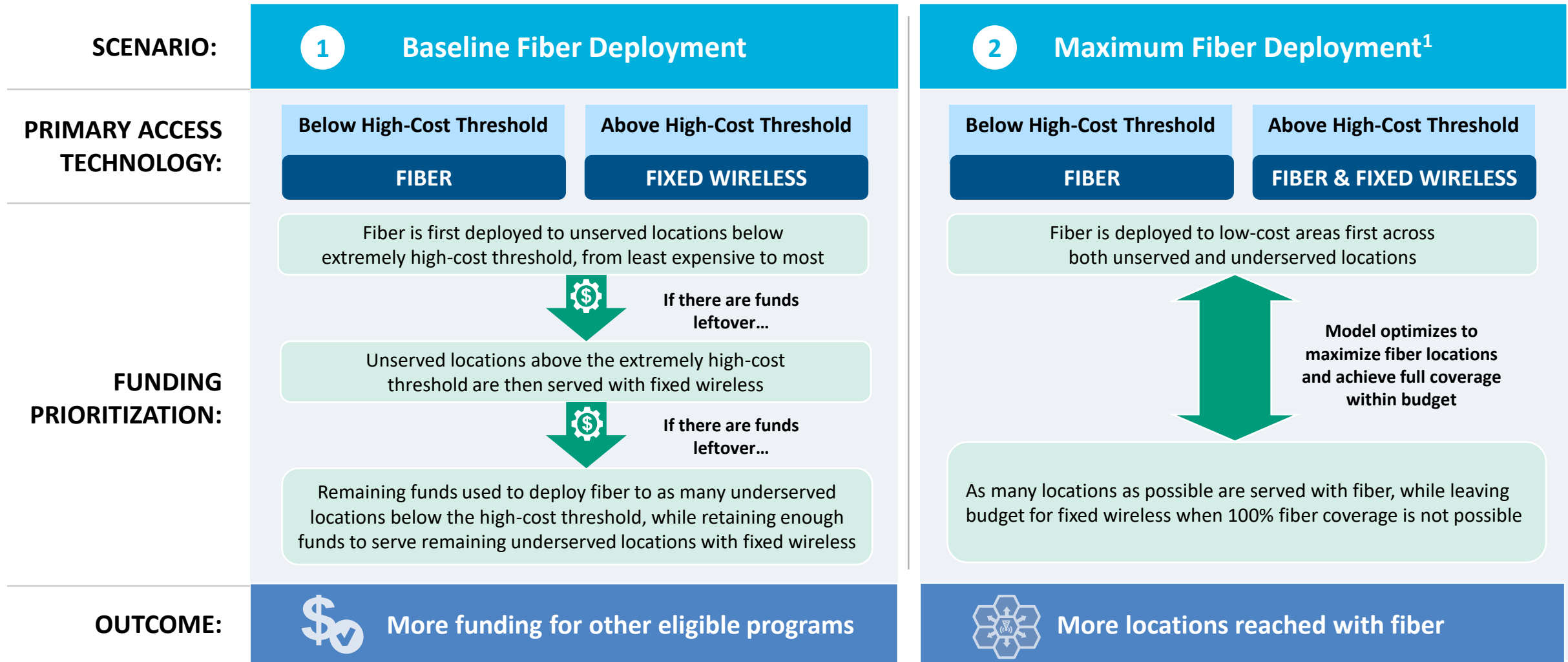


58.3K Locations

Over 55% of locations are estimated to fall below the High-Cost Threshold + Provider Match

1. Chart values are average cost per location for each decile bucket
 Source: Cartesian, FCC National Broadband Map (June 2023 data, released in November 2023)
 Confidential and Proprietary — Copyright © 2024 Cartesian, Inc. All rights reserved.

Oklahoma | Fiber Preferencing Scenarios



1. Scenario 2 deploys fiber beyond the extremely high-cost threshold

Source: Cartesian

Confidential and Proprietary — Copyright © 2024 Cartesian, Inc. All rights reserved.

3 Develop Deployment Scenarios

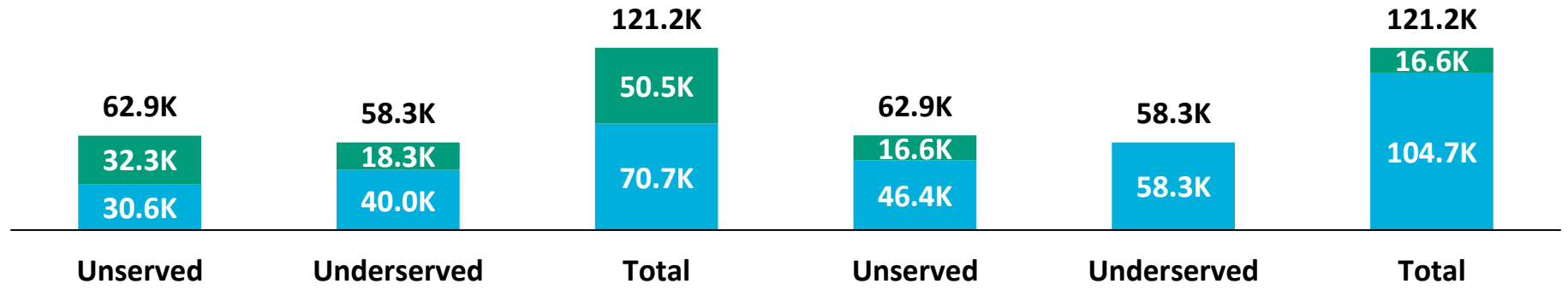
Oklahoma | Scenario Analysis Results

SCENARIO:

1 Baseline Fiber Deployment

2 Maximum Fiber Deployment

■ Fixed Wireless
■ Fiber



| | Scenario 1 | Scenario 2 |
|---|------------|------------|
| Capex Required per Locations ¹ | \$6,370 | \$6,391 |
| BEAD Funds Available to State | \$797M | \$797M |
| + Estimated Provider Match | \$358M | \$358M |
| = Total Available Capital | \$1.2B | \$1.2B |
| - Capex Required to Build | \$775M | \$1.2B |
| = Remaining Funds | \$381M | \$--M |
| % of Locations Reached | 100% | 100% |
| % of Locations Reached with Fiber | 58% | 86% |

1. Funding to deploy fiber before the maximum \$3k provider match per location
 Source: Cartesian, FCC National Broadband Map (June 2023 data, released in November 2023), Benton, NTIA
 Confidential and Proprietary — Copyright © 2024 Cartesian, Inc. All rights reserved.

Oklahoma | Conclusion



Funding Summary

Oklahoma is expected to receive

\$797M in BEAD funding



\$358M in estimated provider matching

We estimate the funding is sufficient to reach all of Oklahoma's 121.2k eligible locations with high-speed broadband



Key Findings

Oklahoma will need to decide how far to deploy fiber while considering the trade-off of having higher fiber coverage vs. retaining funds for other BEAD eligible programs

A Baseline Fiber Deployment...



Maximizing Fiber...

- Leaves \$381M additional funds for affordability programs
 - Reaches 58% of locations with fiber
 - Requires 42% to be reached with other tech.
- Exhausts funds without leaving additional funds for affordability programs
 - Reaches 86% of locations with fiber
 - Requires 14% to be reached with other tech.

States/Territories will set their own extremely high-cost threshold and may choose a threshold or funding paradigm different from these two scenarios

Oklahoma | ACA Connects Members

| Member Name |
|-------------------------------------|
| Broken Bow Cable |
| Cable One, Inc. |
| Carnegie Cable |
| CIM Tel Cable, Inc. |
| Clarity Telecom, LLC dba Bluepeak |
| Consolidated Communications, Inc. |
| Crawkan Telephone Cooperative, Inc. |
| GTC, Inc. |
| Hinton Catv Co, Inc. |
| Northeast Rural Services, Inc. |
| Oklahoma Fiber, LLC |
| Ozarksgo, LLC |
| Pioneer Telephone Cooperative, Inc. |
| Sallisaw Municipal Authority |
| Southern Plains Cable TV |
| TDS Telecom |
| United Communications Assn, Inc. |
| Vyve |



www.acaconnects.org

GRANT SPELLMEYER
PRESIDENT AND CEO
GSPELLMEYER@ACACONNECTS.ORG

BRIAN HURLEY
CHIEF REGULATORY COUNSEL
BHURLEY@ACACONNECTS.ORG



www.cartesian.com

MICHAEL DARGUE
VICE PRESIDENT
MICHAEL.DARGUE@CARTESIAN.COM

SAMUEL KORNSTEIN
MANAGING DIRECTOR
SAMUEL.KORNSTEIN@CARTESIAN.COM