

# BEAD Program: A Framework to Allocate Funding for Broadband Availability

## State Broadband Report: New York

January 2024





## 1 Eligible Locations

*How many unserved/underserved locations are eligible for BEAD funding?*

**3%**  
118K LOCATIONS  
OF NEW YORK LOCATIONS LACK HIGH-SPEED BROADBAND IN JUN 2023  
VS. 9% STATE/TERRITORY AVERAGE

### UNSERVED LOCATIONS, JUN. 2024

**75.9K**  
LOCATIONS  
Are estimated to lack broadband access at **25/3 Mbps**

### UNDERSERVED LOCATIONS, JUN. 2024

**10.7K**  
LOCATIONS  
Are estimated to lack broadband access at **100/20 Mbps**

These locations are primarily in rural areas and are eligible for BEAD funding to deploy broadband service.

## 2 Total Funding

*How much capital funding is the State/Territory estimated to have?*

**\$665M**  
IN BEAD FUNDING HAS BEEN ALLOCATED TO NEW YORK  
VS. \$743M STATE/TERRITORY AVERAGE

### ESTIMATED BEAD FUNDING:

BEAD Funds allocated by NTIA	<b>\$665M</b>
Estimated Provider Match	<b>\$256M</b>
Estimated Total Capital	<b>\$920M</b>

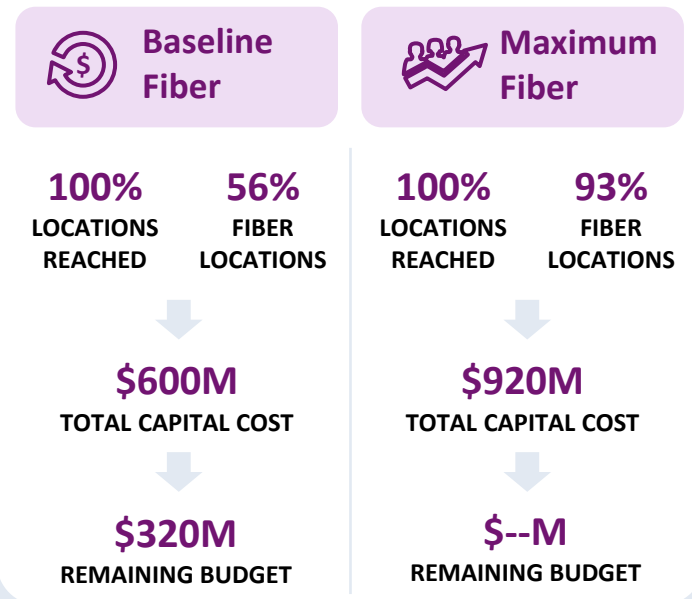
The provider match is estimated using a high-level service provider business case. See national summary deck for full details.

## 3 Deployment

*How many locations can be covered with fiber and other technologies?*

**\$344M-\$665M**  
OF BEAD FUNDS IS REQUIRED TO BUILD HIGH-SPEED BROADBAND TO ALL ELIGIBLE LOCATIONS

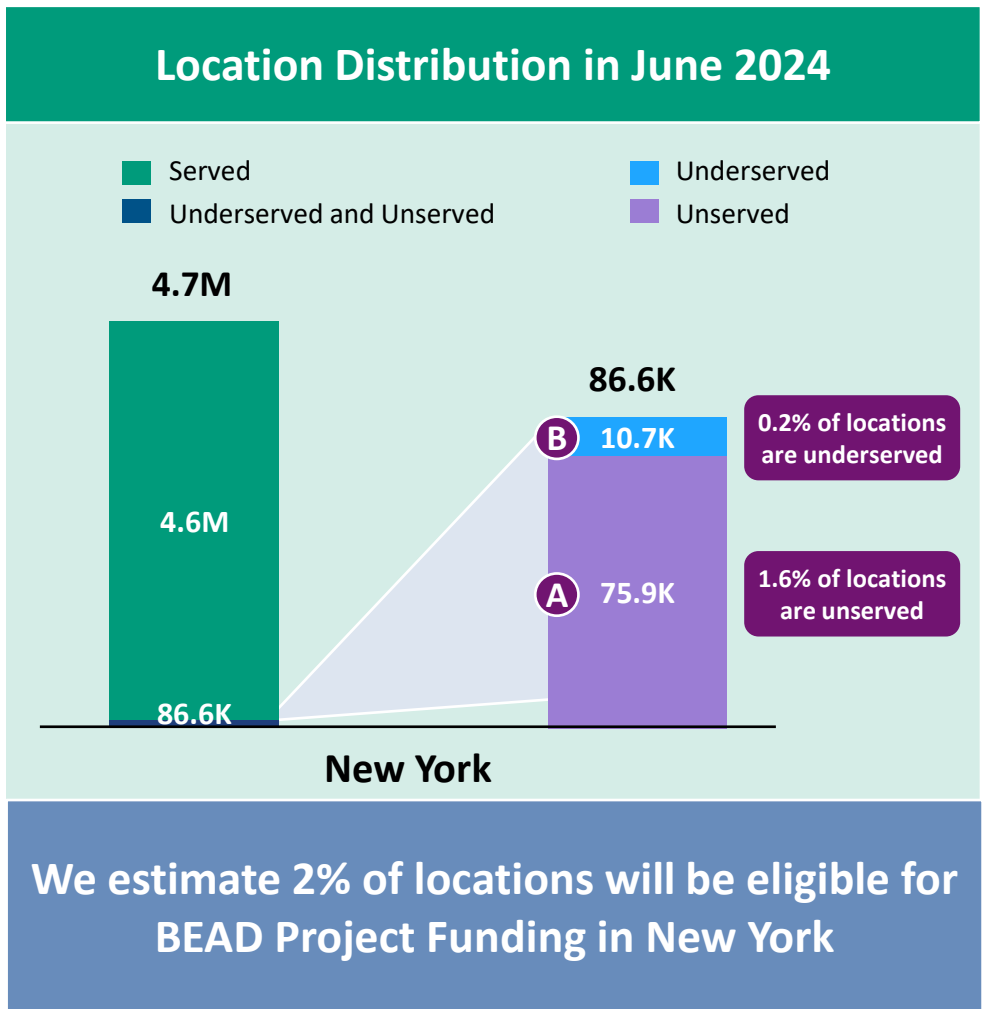
### DEPLOYMENT SCENARIOS:



**1** Estimate Eligible Locations

# New York | Estimated Eligible Locations for BEAD Projects

June 2023 FCC Broadband Locations	Unserved <i>(less than 25Mbps/3Mbps)</i>	Underserved <i>(less than 100Mbps/20Mbps)</i>
Subsidy Program Funded Locations <sup>1</sup>	17.7K	2.3K
Incremental Build <sup>2</sup> <i>(13% annual build, for 12 months)</i>	11.3K	--
<b>Jun. 2024 Estimated Eligible Locations</b>	<b>75.9K (A)</b>	<b>10.7K (B)</b>

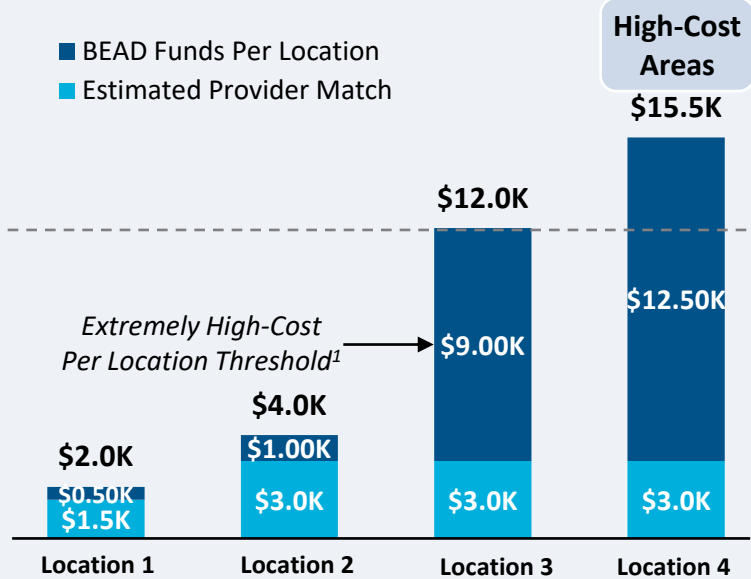


1. Locations with "commitments" to receive support from federal subsidy programs  
 2. Given the uncertainty around the magnitude of locations moving from unserved to underserved, we have not made incremental builds adjustments to underserved locations  
 BEAD eligible locations does not account for state-specific eligibility rules set forth in Initial Proposals  
 Source: Cartesian, FCC National Broadband Map (June 2023 data, released in November 2023)  
 Confidential and Proprietary — Copyright © 2024 Cartesian, Inc. All rights reserved.

## Provider Match Examples

## Total Deployment Cost per Location

- BEAD Funds Per Location
- Estimated Provider Match

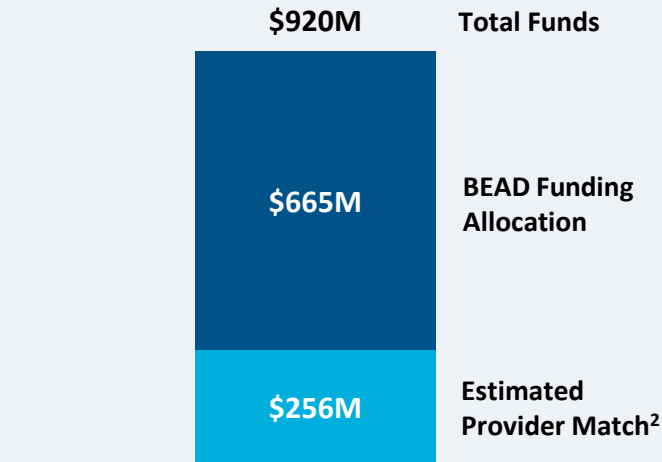


## Provider Match %

75%	75%	25%	19%
-----	-----	-----	-----

To be conservative, we assume provider match amounts have a maximum of 75% and a minimum of 25%, except in high-cost areas

## Total Capital Available - New York



\$920M in total capital is estimated to be available to serve unserved/underserved New York locations (combining BEAD funding and estimated provider match)

## Provider Match - New York

Total Estimated  
Provider Match:

\$256M

Total Estimated  
Eligible Locations:

86.6K

Average  
Provider Match:

\$2,952  
PER LOCATION

We estimate the average provider match will be \$2,952 – provider matches will be 75% where cost to deploy is less than \$4K

1. The model uses a \$9k threshold, however, States/Territories will individually need to determine their appropriate extremely high-cost threshold

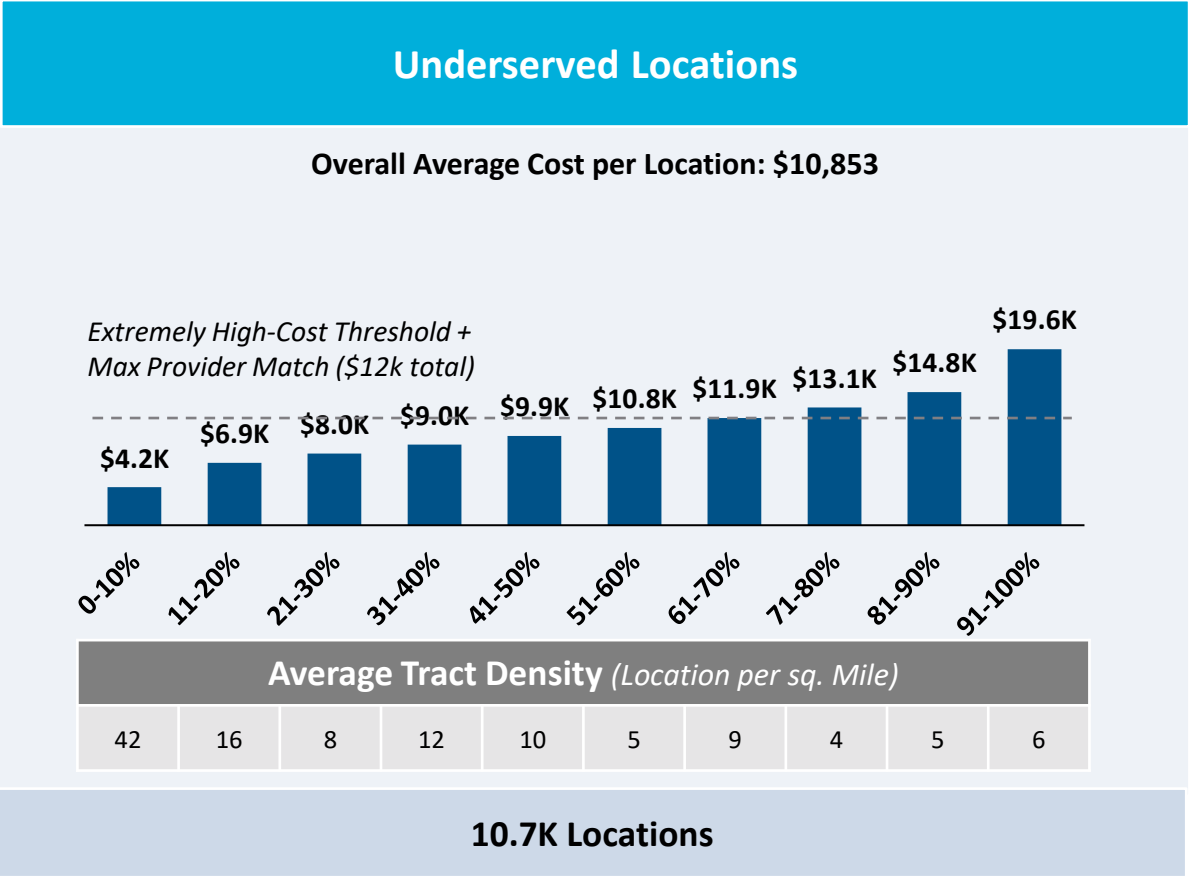
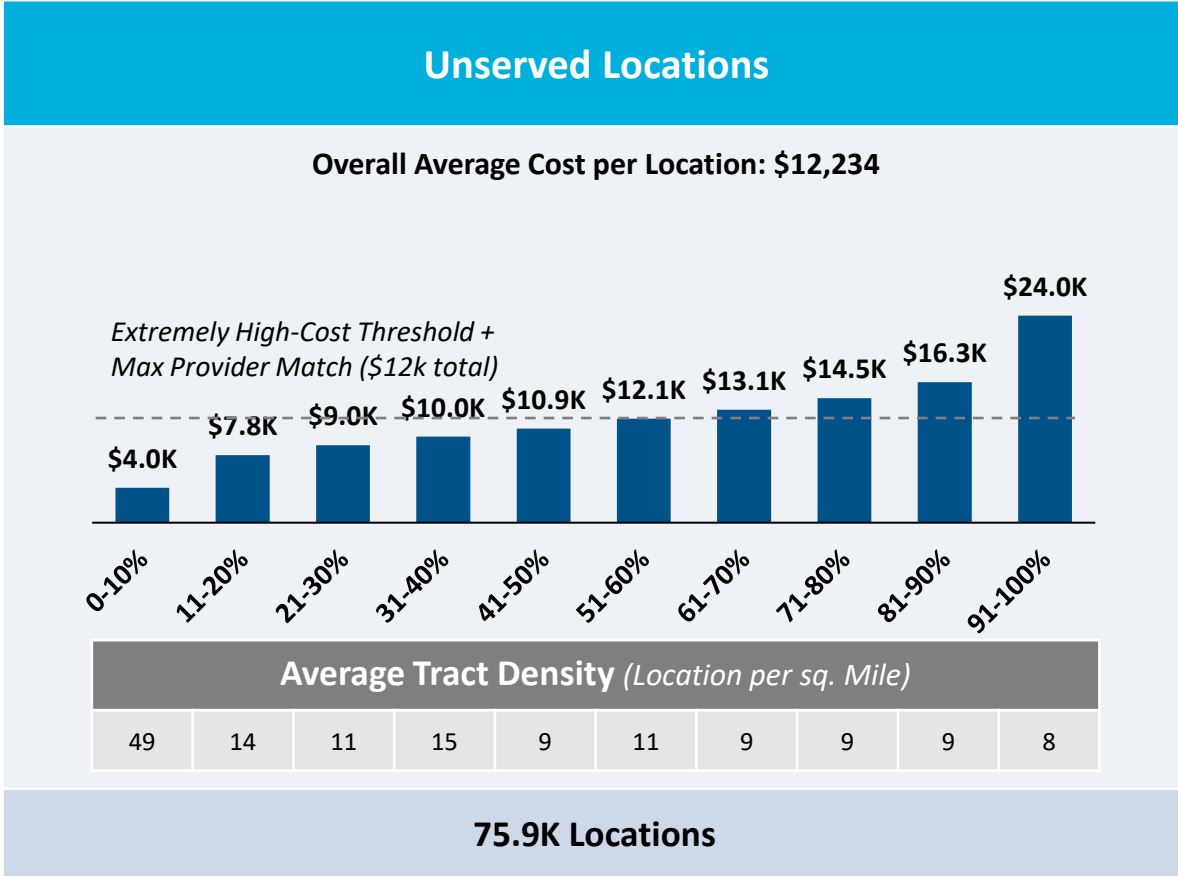
2. In reality, providers will determine the viable level of match funding for each project using a business case model. They will be willing to contribute a greater match in some locations and less in others. Locations which are hardest to serve may need to be fully funded by BEAD with no match. Competitive bidding should drive provider matches towards this level.

Source: Cartesian, FCC National Broadband Map (June 2023 data, released in November 2023), Benton, NTIA

Confidential and Proprietary — Copyright © 2024 Cartesian, Inc. All rights reserved.

# New York | Cost to Deploy Fiber by Decile

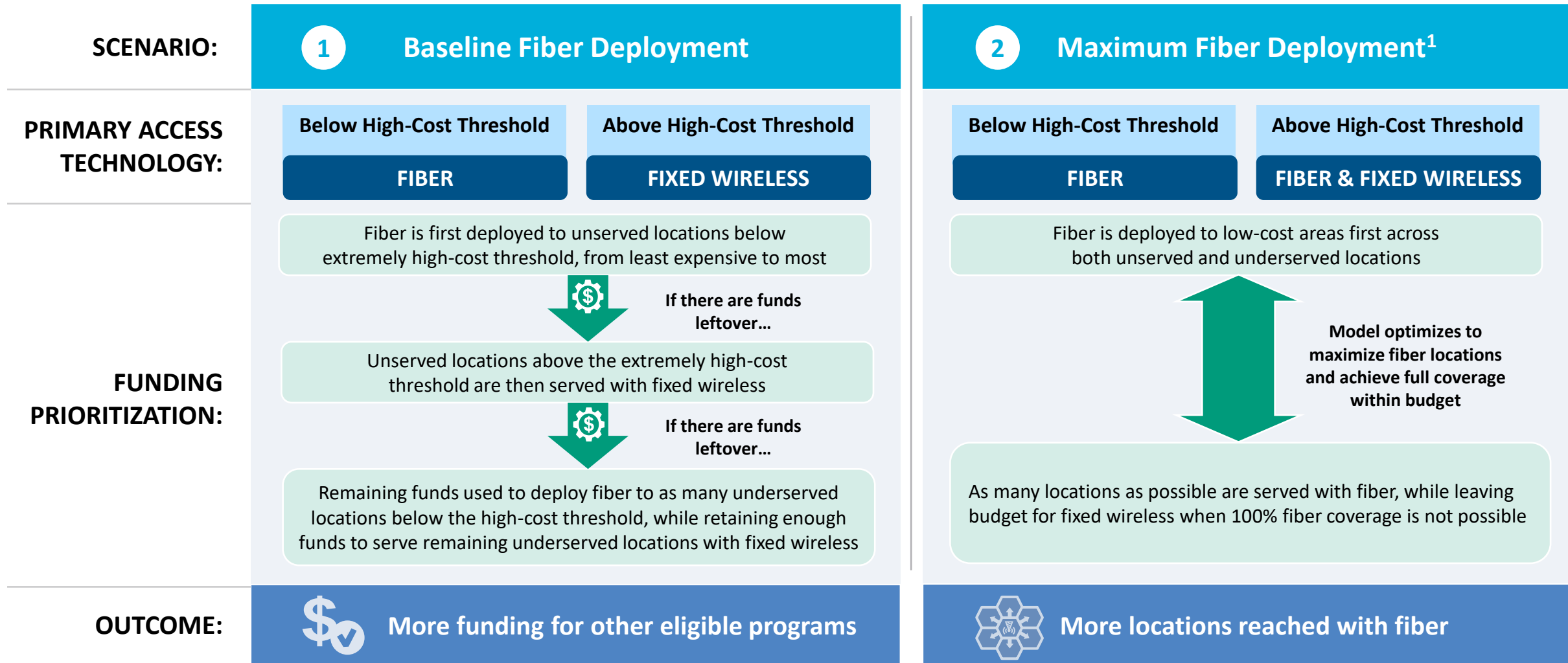
## CAPEX Fiber Deployment Cost per Location Segmented by Cost Deciles<sup>1</sup>



**Over 50% of locations are estimated to fall below the High-Cost Threshold + Provider Match**

1. Chart values are average cost per location for each decile bucket  
 Source: Cartesian, FCC National Broadband Map (June 2023 data, released in November 2023)  
 Confidential and Proprietary — Copyright © 2024 Cartesian, Inc. All rights reserved.

# New York | Fiber Preferencing Scenarios



1. Scenario 2 deploys fiber beyond the extremely high-cost threshold  
 Source: Cartesian  
 Confidential and Proprietary — Copyright © 2024 Cartesian, Inc. All rights reserved.

# 3 Develop Deployment Scenarios

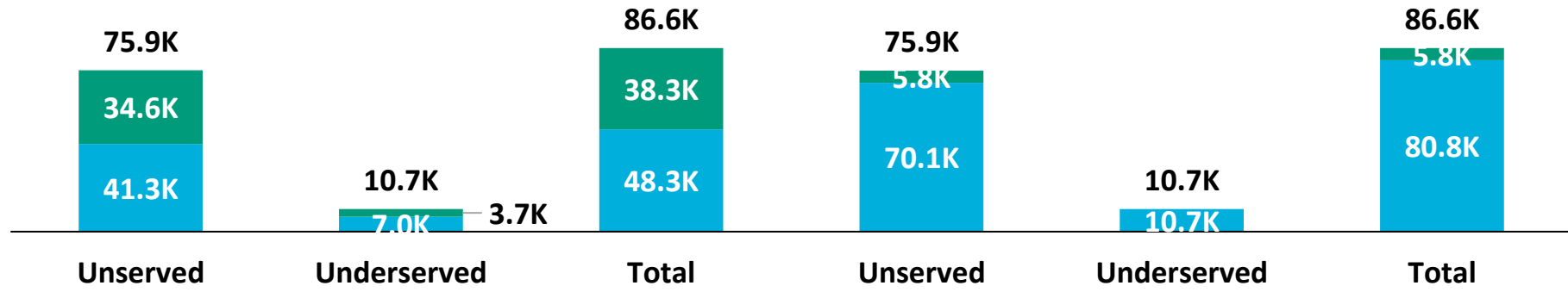
## New York | Scenario Analysis Results

SCENARIO:

### 1 Baseline Fiber Deployment

### 2 Maximum Fiber Deployment

■ Fixed Wireless  
■ Fiber



	Scenario 1	Scenario 2
Capex Required per Locations <sup>1</sup>	\$6,898	\$10,595
BEAD Funds Available to State	\$665M	\$665M
+ Estimated Provider Match	\$256M	\$256M
= Total Available Capital	\$920M	\$920M
- Capex Required to Build	\$600M	\$920M
= Remaining Funds	\$320M	\$--M
% of Locations Reached	100%	100%
% of Locations Reached with Fiber	56%	93%

1. Funding to deploy fiber before the maximum \$3k provider match per location  
 Source: Cartesian, FCC National Broadband Map (June 2023 data, released in November 2023), Benton, NTIA  
 Confidential and Proprietary — Copyright © 2024 Cartesian, Inc. All rights reserved.



## Funding Summary

New York is expected to receive

**\$665M in BEAD funding**



**\$256M in estimated provider matching**

We estimate the funding is sufficient to reach all of New York's 86.6k eligible locations with high-speed broadband



## Key Findings

New York will need to decide how far to deploy fiber while considering the trade-off of having higher fiber coverage vs. retaining funds for other BEAD eligible programs

### A Baseline Fiber Deployment...



### Maximizing Fiber...

- Leaves \$320M additional funds for affordability programs
- Reaches 56% of locations with fiber
- Requires 44% to be reached with other tech.

- Exhausts funds without leaving additional funds for affordability programs
- Reaches 93% of locations with fiber
- Requires 7% to be reached with other tech.

**States/Territories will set their own extremely high-cost threshold and may choose a threshold or funding paradigm different from these two scenarios**



# New York | ACA Connects Members

Member Name
Adams Catv, Inc.
Armstrong
Astound Broadband
Atlantic Broadband
Atlas Connectivity, LLC
Citizens Cablevision, Inc.
Consolidated Communications, Inc.
DTC Cable, Inc.
Haefele TV, Inc.
Hancock Video
Hilltop Communications, Inc.
Midhudson Cablevision
Midtel Cable TV, Inc.
MTC Cable
New Visions Communications, Inc.
Point Broadband, LLC
TDS Telecom
Vermont Telephone Company, Inc.
Youngsville TV Corp



[www.acaconnects.org](http://www.acaconnects.org)

**GRANT SPELLMEYER**  
PRESIDENT AND CEO  
GSPELLMEYER@ACACONNECTS.ORG

**BRIAN HURLEY**  
CHIEF REGULATORY COUNSEL  
BHURLEY@ACACONNECTS.ORG



[www.cartesian.com](http://www.cartesian.com)

**MICHAEL DARGUE**  
VICE PRESIDENT  
MICHAEL.DARGUE@CARTESIAN.COM

**SAMUEL KORNSTEIN**  
MANAGING DIRECTOR  
SAMUEL.KORNSTEIN@CARTESIAN.COM