

BEAD Program: A Framework to Allocate Funding for Broadband Availability

State Broadband Report: Indiana

January 2024





1 Eligible Locations

How many unserved/underserved locations are eligible for BEAD funding?

8%
224K LOCATIONS
OF INDIANA LOCATIONS LACK HIGH-SPEED BROADBAND IN JUN 2023
VS. 9% STATE/TERRITORY AVERAGE

UNSERVED LOCATIONS, JUN. 2024



98.9K
LOCATIONS

Are estimated to lack broadband access at **25/3 Mbps**

UNDERSERVED LOCATIONS, JUN. 2024



42.7K
LOCATIONS

Are estimated to lack broadband access at **100/20 Mbps**

These locations are primarily in rural areas and are eligible for BEAD funding to deploy broadband service.

2 Total Funding

How much capital funding is the State/Territory estimated to have?

\$868M
IN BEAD FUNDING HAS BEEN ALLOCATED TO INDIANA
VS. \$743M STATE/TERRITORY AVERAGE

ESTIMATED BEAD FUNDING:

BEAD Funds allocated by NTIA

\$868M

Estimated Provider Match

\$416M

Estimated Total Capital

\$1.3B

The provider match is estimated using a high-level service provider business case. See national summary deck for full details.

3 Deployment

How many locations can be covered with fiber and other technologies?

\$558M-\$683M
OF BEAD FUNDS IS REQUIRED TO BUILD HIGH-SPEED BROADBAND TO ALL ELIGIBLE LOCATIONS

DEPLOYMENT SCENARIOS:

Baseline Fiber

100%
LOCATIONS REACHED

92%
FIBER LOCATIONS

\$974M
TOTAL CAPITAL COST

\$310M
REMAINING BUDGET

Maximum Fiber





100%
LOCATIONS REACHED

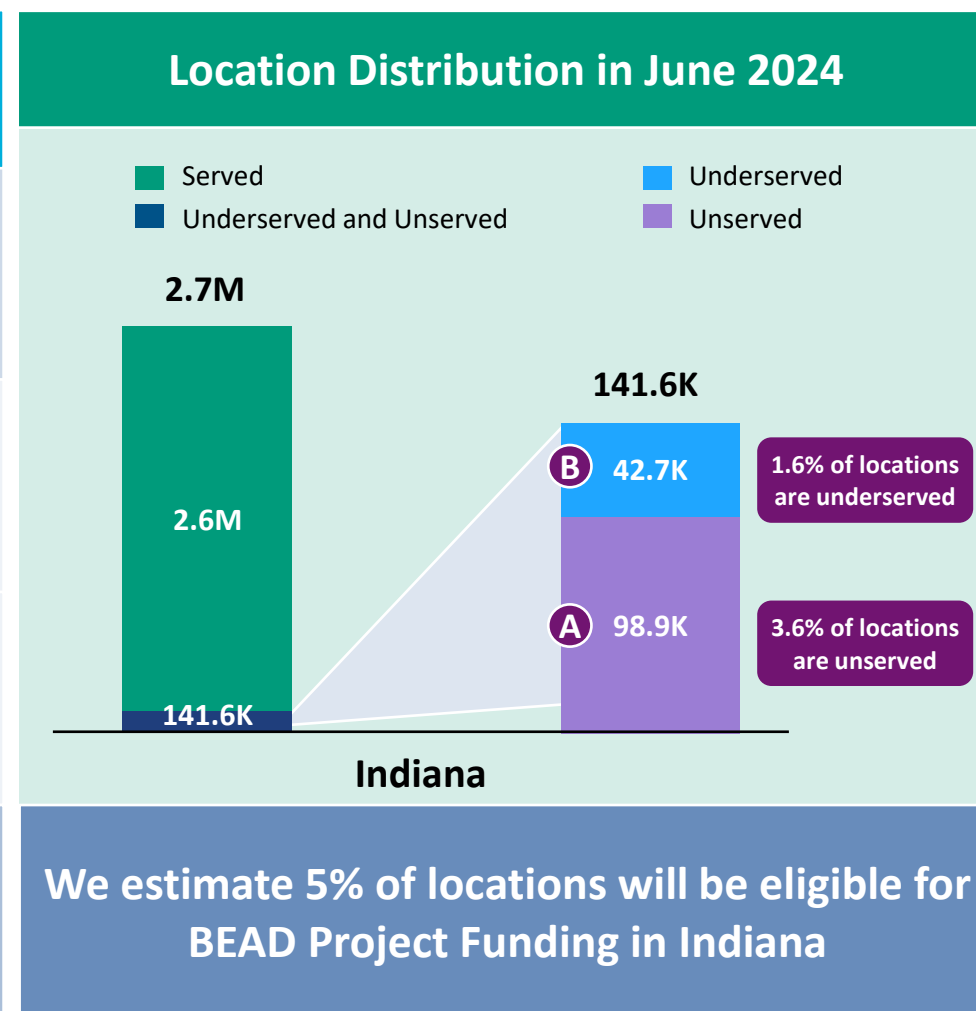
100%
FIBER LOCATIONS

\$1.1B
TOTAL CAPITAL COST

\$185M
REMAINING BUDGET

Indiana | Estimated Eligible Locations for BEAD Projects

 June 2023 FCC Broadband Locations	Unerved <i>(less than 25Mbps/3Mbps)</i>	Underserved <i>(less than 100Mbps/20Mbps)</i>
		165.4K
 Subsidy Program Funded Locations ¹	51.7K	16.3K
 Incremental Build ² (13% annual build, for 12 months)	14.8K	--
 Jun. 2024 Estimated Eligible Locations	98.9K (A)	42.7K (B)



1. Locations with "commitments" to receive support from federal subsidy programs

2. Given the uncertainty around the magnitude of locations moving from unerved to underserved, we have not made incremental builds adjustments to underserved locations

BEAD eligible locations does not account for state-specific eligibility rules set forth in Initial Proposals

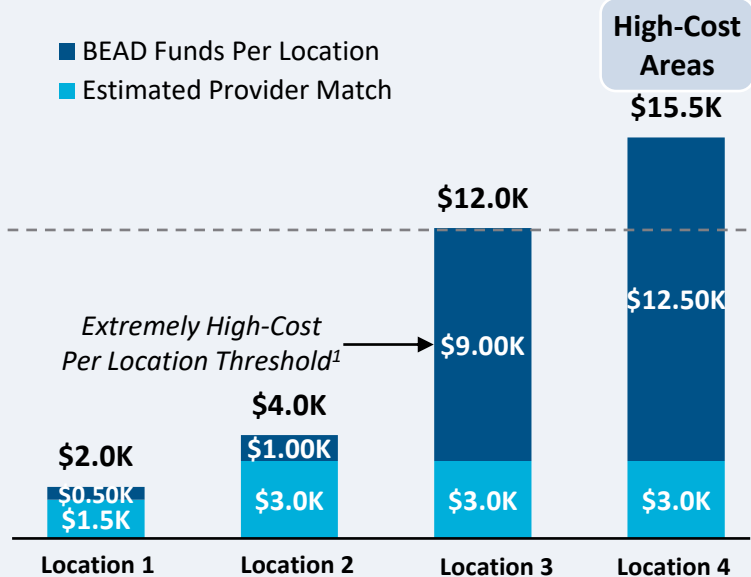
Source: Cartesian, FCC National Broadband Map (June 2023 data, released in November 2023)

Confidential and Proprietary — Copyright © 2024 Cartesian, Inc. All rights reserved.

Provider Match Examples

Total Deployment Cost per Location

- BEAD Funds Per Location
- Estimated Provider Match

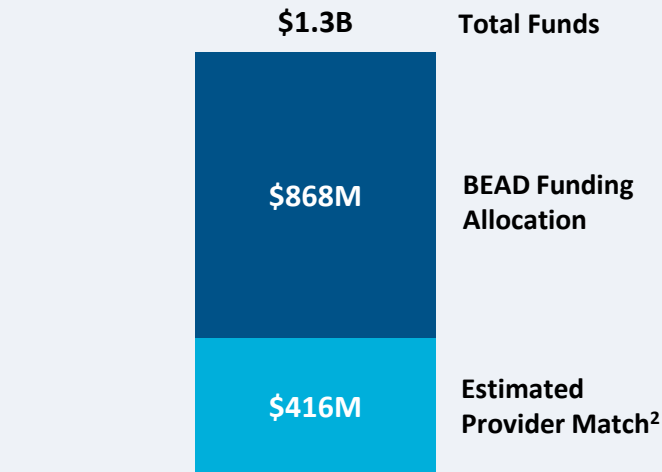


Provider Match %

75%	75%	25%	19%
-----	-----	-----	-----

To be conservative, we assume provider match amounts have a maximum of 75% and a minimum of 25%, except in high-cost areas

Total Capital Available - Indiana



\$1.3B in total capital is estimated to be available to serve unserved/underserved Indiana locations (combining BEAD funding and estimated provider match)

Provider Match - Indiana

Total Estimated Provider Match: **\$416M**

Total Estimated Eligible Locations: **141.6K**

Average Provider Match: **\$2,936 PER LOCATION**

We estimate the average provider match will be \$2,936 – provider matches will be 75% where cost to deploy is less than \$4K

1. The model uses a \$9k threshold, however, States/Territories will individually need to determine their appropriate extremely high-cost threshold

2. In reality, providers will determine the viable level of match funding for each project using a business case model. They will be willing to contribute a greater match in some locations and less in others. Locations which are hardest to serve may need to be fully funded by BEAD with no match. Competitive bidding should drive provider matches towards this level.

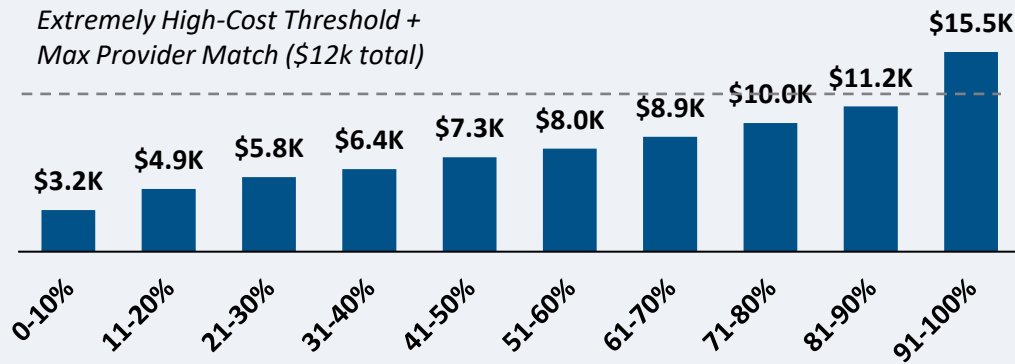
Source: Cartesian, FCC National Broadband Map (June 2023 data, released in November 2023), Benton, NTIA

Confidential and Proprietary — Copyright © 2024 Cartesian, Inc. All rights reserved.

CAPEX Fiber Deployment Cost per Location Segmented by Cost Deciles¹

Unserved Locations

Overall Average Cost per Location: \$8,125

Extremely High-Cost Threshold +
Max Provider Match (\$12k total)

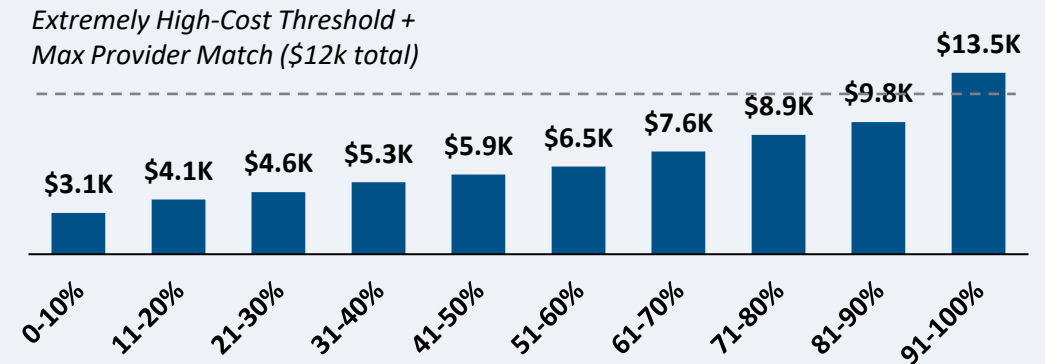
Average Tract Density (Location per sq. Mile)

21	16	14	18	16	12	11	27	14	9
----	----	----	----	----	----	----	----	----	---

98.9K Locations

Underserved Locations

Overall Average Cost per Location: \$6,943

Extremely High-Cost Threshold +
Max Provider Match (\$12k total)

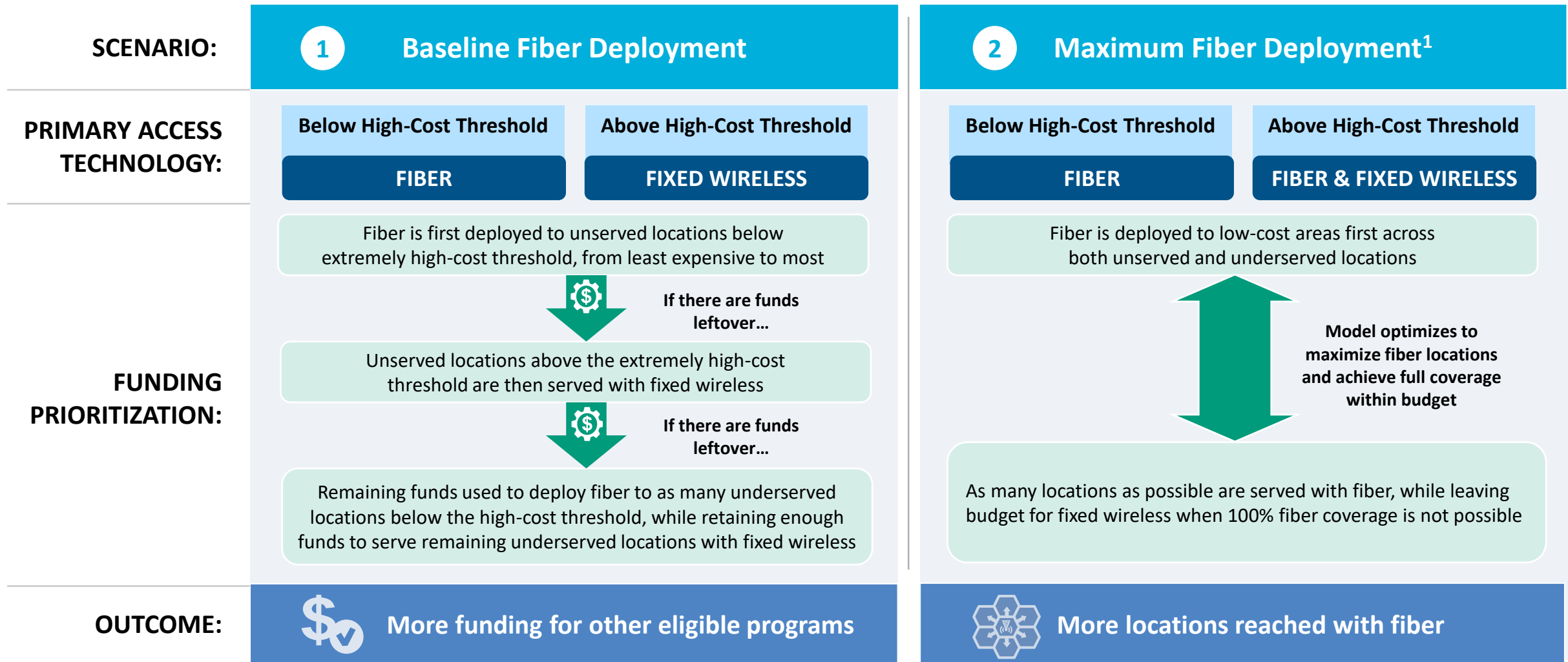
Average Tract Density (Location per sq. Mile)

17	27	9	10	34	20	20	16	27	9
----	----	---	----	----	----	----	----	----	---

42.7K Locations

Over 90% of locations are estimated to fall below the High-Cost Threshold + Provider Match

Indiana | Fiber Preferencing Scenarios



1. Scenario 2 deploys fiber beyond the extremely high-cost threshold

Source: Cartesian

Confidential and Proprietary — Copyright © 2024 Cartesian, Inc. All rights reserved.

3 Develop Deployment Scenarios

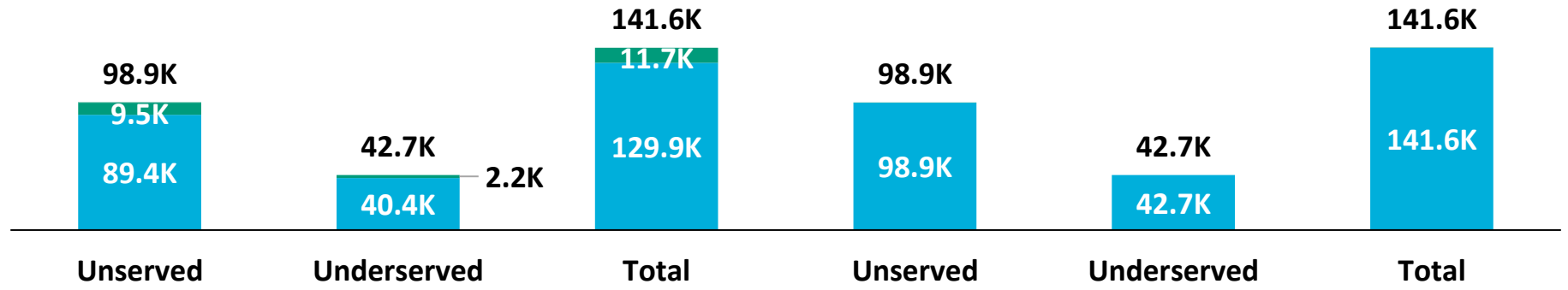
Indiana | Scenario Analysis Results

SCENARIO:

1 Baseline Fiber Deployment

2 Maximum Fiber Deployment

■ Fixed Wireless
■ Fiber



	Scenario 1	Scenario 2
Capex Required per Locations ¹	\$7,091	\$7,763
BEAD Funds Available to State	\$868M	\$868M
+ Estimated Provider Match	\$416M	\$416M
= Total Available Capital	\$1.3B	\$1.3B
- Capex Required to Build	\$974M	\$1.1B
= Remaining Funds	\$310M	\$185M
% of Locations Reached	100%	100%
% of Locations Reached with Fiber	92%	100%

1. Funding to deploy fiber before the maximum \$3k provider match per location
 Source: Cartesian, FCC National Broadband Map (June 2023 data, released in November 2023), Benton, NTIA
 Confidential and Proprietary — Copyright © 2024 Cartesian, Inc. All rights reserved.



Funding Summary

Indiana is expected to receive

\$868M in BEAD funding



\$416M in estimated provider matching

We estimate the funding is sufficient to reach all of Indiana's 141.6k eligible locations with high-speed broadband



Key Findings

Indiana appears well positioned to reach all eligible premises and have funding for other BEAD eligible programs

A Baseline Fiber Deployment...



Maximizing Fiber...

- Leaves \$310M additional funds for affordability programs
- Reaches 92% of locations with fiber
- Requires 8% to be reached with other tech.

- Leaves \$185M additional funds for affordability programs
- Reaches 100% of locations with fiber
- Requires 0% to be reached with other tech.

States/Territories will set their own extremely high-cost threshold and may choose a threshold or funding paradigm different from these two scenarios

Indiana | ACA Connects Members

Member Name
Astound Broadband
Benton Ridge Telephone Company
Cable One, Inc.
Cincinnati Bell, Inc.
Citizens Telephone Corporation
Consolidated Communications, Inc.
Craigville Telephone Company, Inc.
FBN Indiana, Inc. dba Nitco
Grain Capital
Mediacom, LLC
Metronet
Mulberry Cooperative Telephone Co, Inc.
Quality Cablevision
RTC Communications Corp
TDS Telecom
Wabash Mutual Telephone Company
White Cloud Communications Us, LLC dba Broadlinc



www.acaconnects.org

GRANT SPELLMEYER
PRESIDENT AND CEO
GSPELLMEYER@ACACONNECTS.ORG

BRIAN HURLEY
CHIEF REGULATORY COUNSEL
BHURLEY@ACACONNECTS.ORG



www.cartesian.com

MICHAEL DARGUE
VICE PRESIDENT
MICHAEL.DARGUE@CARTESIAN.COM

SAMUEL KORNSTEIN
MANAGING DIRECTOR
SAMUEL.KORNSTEIN@CARTESIAN.COM