

# BEAD Program: A Framework to Allocate Funding for Broadband Availability

## State Broadband Report: Idaho

January 2024





## 1 Eligible Locations

How many unserved/underserved locations are eligible for BEAD funding?

21%

156K LOCATIONS

OF IDAHO LOCATIONS LACK HIGH-SPEED BROADBAND IN JUN 2023

VS. 9% STATE/TERRITORY AVERAGE

### UNSERVED LOCATIONS, JUN. 2024



68.7K LOCATIONS

Are estimated to lack broadband access at 25/3 Mbps

### UNDERSERVED LOCATIONS, JUN. 2024



53.8K LOCATIONS

Are estimated to lack broadband access at 100/20 Mbps

These locations are primarily in rural areas and are eligible for BEAD funding to deploy broadband service.

## 2 Total Funding

How much capital funding is the State/Territory estimated to have?

\$583M

IN BEAD FUNDING HAS BEEN ALLOCATED TO IDAHO

VS. \$743M STATE/TERRITORY AVERAGE

### ESTIMATED BEAD FUNDING:

BEAD Funds allocated by NTIA

\$583M

Estimated Provider Match

\$341M

Estimated Total Capital

\$924M

The provider match is estimated using a high-level service provider business case. See national summary deck for full details.

## 3 Deployment

How many locations can be covered with fiber and other technologies?

\$274M-\$583M

OF BEAD FUNDS IS REQUIRED TO BUILD HIGH-SPEED BROADBAND TO ALL ELIGIBLE LOCATIONS

### DEPLOYMENT SCENARIOS:



Baseline Fiber



Maximum Fiber

100% LOCATIONS REACHED

47% FIBER LOCATIONS

100% LOCATIONS REACHED

69% FIBER LOCATIONS

\$615M

TOTAL CAPITAL COST

\$924M

TOTAL CAPITAL COST

\$310M





REMAINING BUDGET

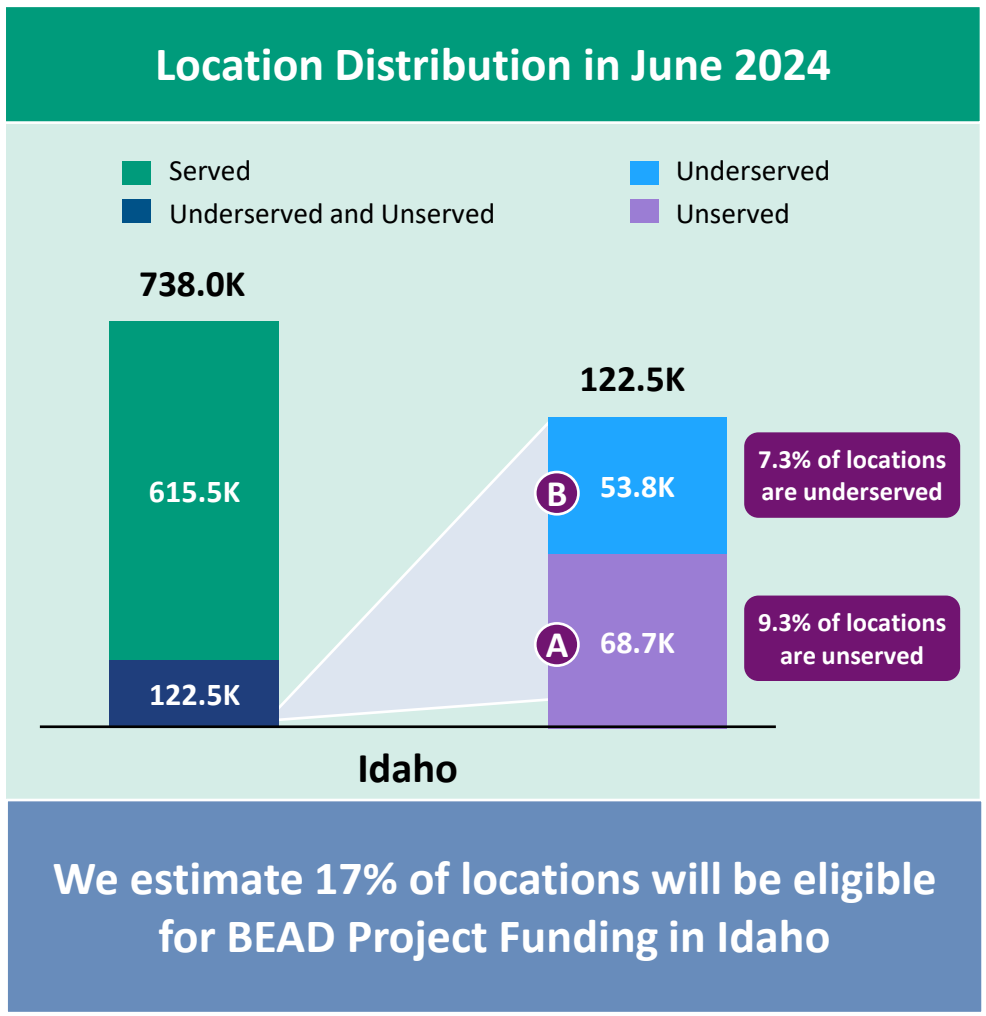
\$--M

REMAINING BUDGET

**1** Estimate Eligible Locations

# Idaho | Estimated Eligible Locations for BEAD Projects

 <b>June 2023 FCC Broadband Locations</b>	Unerved <i>(less than 25Mbps/3Mbps)</i>	Underserved <i>(less than 100Mbps/20Mbps)</i>
		<b>92.5K</b>
 Subsidy Program Funded Locations <sup>1</sup>	13.5K	9.9K
 Incremental Build <sup>2</sup> (13% annual build, for 12 months)	10.3K	--
 <b>Jun. 2024 Estimated Eligible Locations</b>	<b>68.7K</b> <b>A</b>	<b>53.8K</b> <b>B</b>



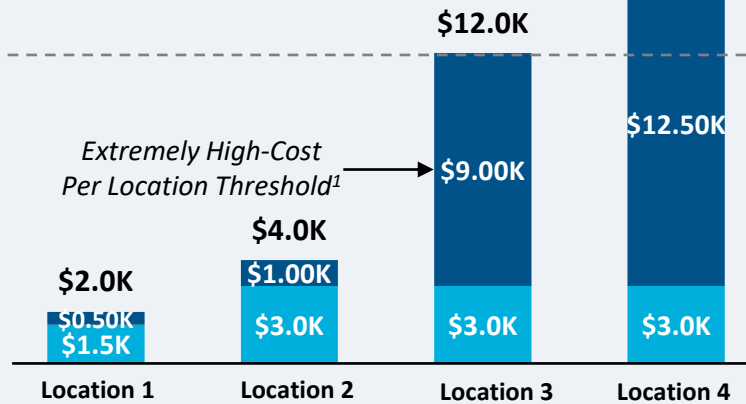
1. Locations with "commitments" to receive support from federal subsidy programs  
 2. Given the uncertainty around the magnitude of locations moving from unerved to underserved, we have not made incremental builds adjustments to underserved locations  
 BEAD eligible locations does not account for state-specific eligibility rules set forth in Initial Proposals  
 Source: Cartesian, FCC National Broadband Map (June 2023 data, released in November 2023)  
 Confidential and Proprietary — Copyright © 2024 Cartesian, Inc. All rights reserved.

## Provider Match Examples

## Total Deployment Cost per Location

- BEAD Funds Per Location
- Estimated Provider Match

High-Cost  
Areas  
\$15.5K

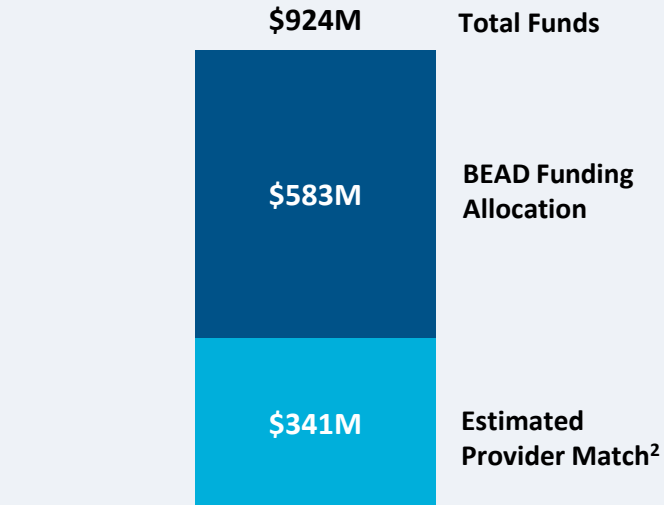


## Provider Match %

75%	75%	25%	19%
-----	-----	-----	-----

To be conservative, we assume provider match amounts have a maximum of 75% and a minimum of 25%, except in high-cost areas

## Total Capital Available - Idaho



\$924M in total capital is estimated to be available to serve unserved/underserved Idaho locations (combining BEAD funding and estimated provider match)

## Provider Match – Idaho

Total Estimated  
Provider Match:

\$341M

Total Estimated  
Eligible Locations:

122.5K

Average  
Provider Match:

\$2,782  
PER LOCATION

We estimate the average provider match will be \$2,782 – provider matches will be 75% where cost to deploy is less than \$4K

1. The model uses a \$9k threshold, however, States/Territories will individually need to determine their appropriate extremely high-cost threshold

2. In reality, providers will determine the viable level of match funding for each project using a business case model. They will be willing to contribute a greater match in some locations and less in others. Locations which are hardest to serve may need to be fully funded by BEAD with no match. Competitive bidding should drive provider matches towards this level.

Source: Cartesian, FCC National Broadband Map (June 2023 data, released in November 2023), Benton, NTIA

Confidential and Proprietary — Copyright © 2024 Cartesian, Inc. All rights reserved.

# Idaho | Cost to Deploy Fiber by Decile

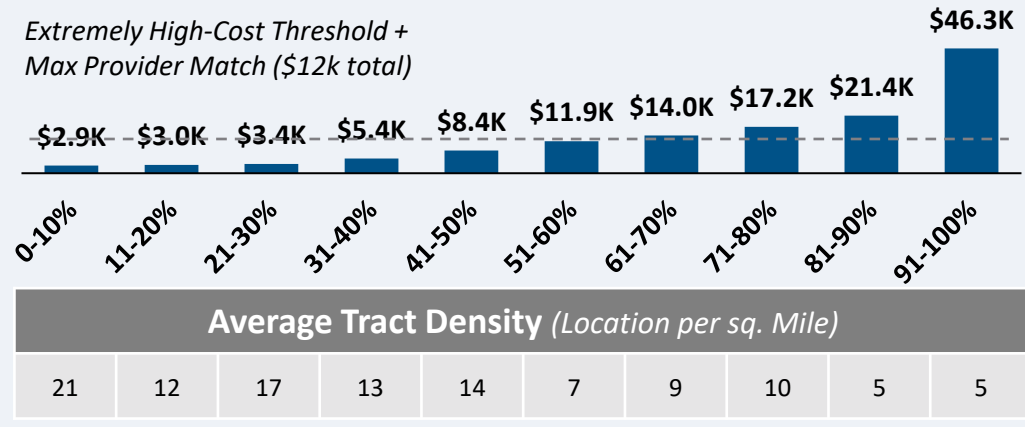
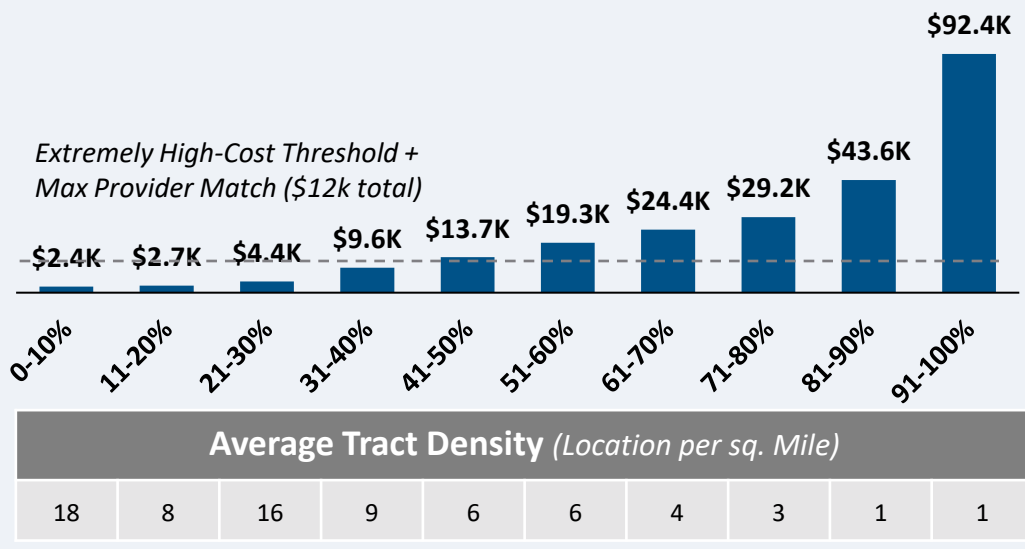
## CAPEX Fiber Deployment Cost per Location Segmented by Cost Deciles<sup>1</sup>

### Unserved Locations

### Underserved Locations

Overall Average Cost per Location: \$25,079

Overall Average Cost per Location: \$13,922



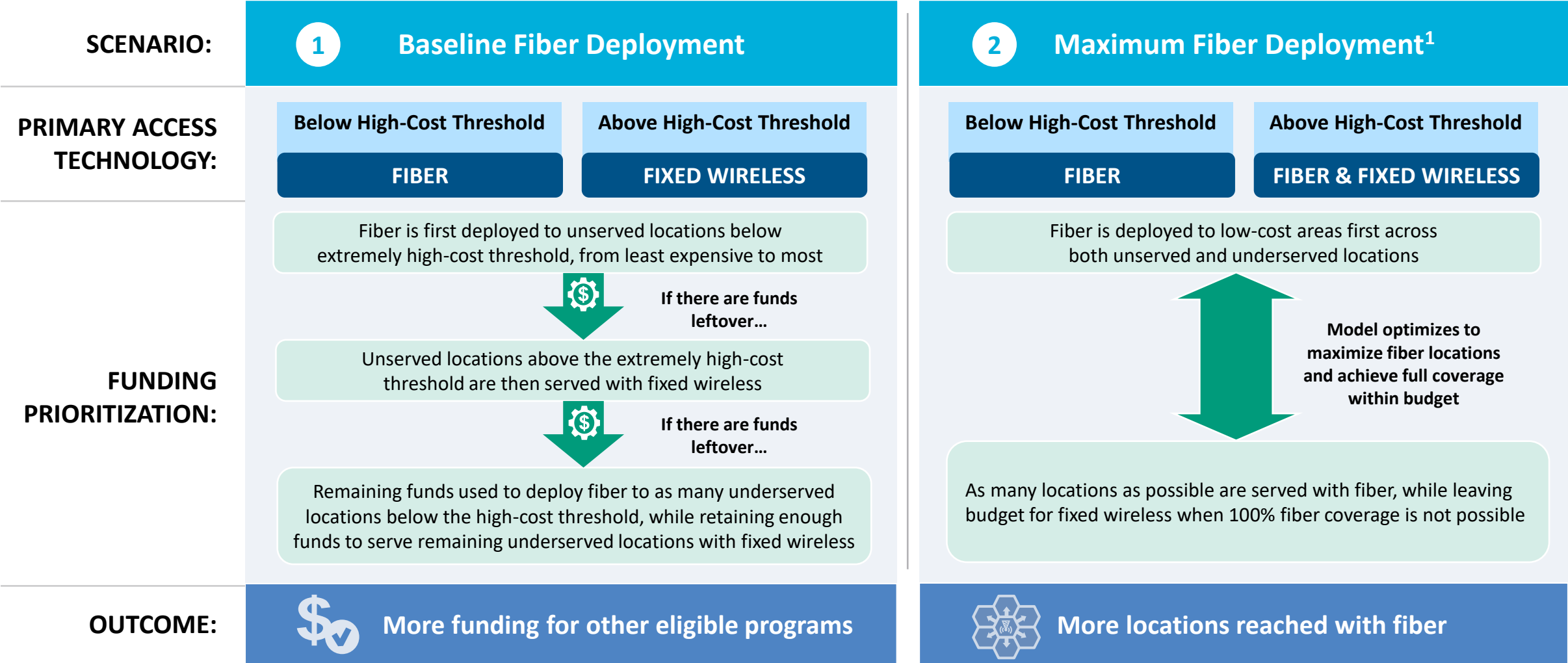
68.7K Locations

53.8K Locations

**Over 45% of locations are estimated to fall below the High-Cost Threshold + Provider Match**

1. Chart values are average cost per location for each decile bucket  
 Source: Cartesian, FCC National Broadband Map (June 2023 data, released in November 2023)  
 Confidential and Proprietary — Copyright © 2024 Cartesian, Inc. All rights reserved.

# Idaho | Fiber Preferencing Scenarios



1. Scenario 2 deploys fiber beyond the extremely high-cost threshold  
 Source: Cartesian  
 Confidential and Proprietary — Copyright © 2024 Cartesian, Inc. All rights reserved.

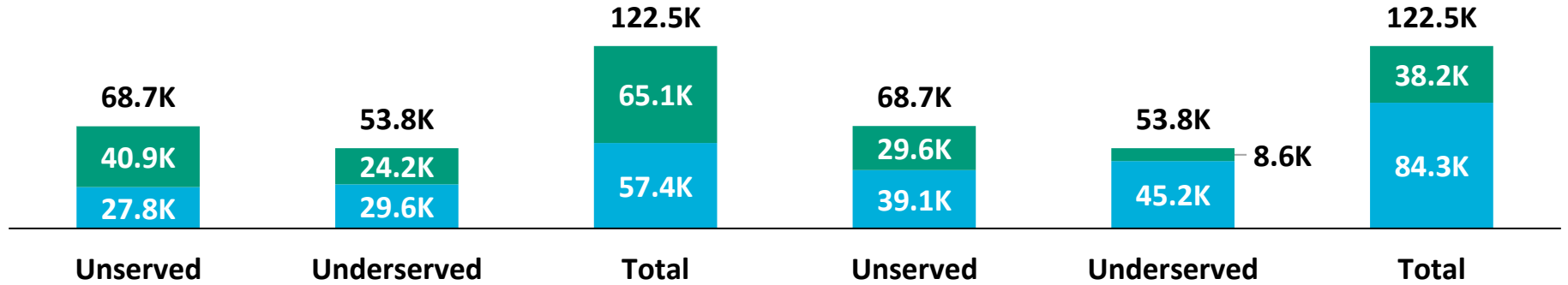
# Idaho | Scenario Analysis Results

SCENARIO:

1 Baseline Fiber Deployment

2 Maximum Fiber Deployment

Fixed Wireless  
Fiber



Capex Required per Locations<sup>1</sup>

Scenario	Unserved	Underserved	Total
1 Baseline Fiber Deployment	\$4,910	\$5,153	\$5,017
2 Maximum Fiber Deployment	\$6,754	\$8,278	\$7,423

BEAD Funds Available to State

\$583M

\$583M

+ Estimated Provider Match

\$341M

\$341M

= Total Available Capital

\$924M

\$924M

- Capex Required to Build

\$615M

+\$310M

\$924M

= Remaining Funds

\$310M

\$--M

% of Locations Reached

100%

100%

% of Locations Reached with Fiber

47%

+22%

69%

1. Funding to deploy fiber before the maximum \$3k provider match per location  
 Source: Cartesian, FCC National Broadband Map (June 2023 data, released in November 2023), Benton, NTIA  
 Confidential and Proprietary — Copyright © 2024 Cartesian, Inc. All rights reserved.



## Funding Summary

Idaho is expected to receive

**\$583M in BEAD funding**



**\$341M in estimated provider matching**

We estimate the funding is sufficient to reach all of Idaho's 122.5k eligible locations with high-speed broadband



## Key Findings

Idaho will need to decide how far to deploy fiber while considering the trade-off of having higher fiber coverage vs. retaining funds for other BEAD eligible programs

### A Baseline Fiber Deployment...



### Maximizing Fiber...

- Leaves \$310M additional funds for affordability programs
  - Reaches 47% of locations with fiber
  - Requires 53% to be reached with other tech.
- Exhausts funds without leaving additional funds for affordability programs
  - Reaches 69% of locations with fiber
  - Requires 31% to be reached with other tech.

**States/Territories will set their own extremely high-cost threshold and may choose a threshold or funding paradigm different from these two scenarios**



# Idaho | ACA Connects Members

Member Name
Cable One, Inc.
Concept Communication Corp
Consolidated Communications, Inc.
El Automation, Inc.
Northwest Fiber, LLC
Project Mutual Telephone
Rural Telephone Company
TDS Telecom
Vyve



[www.acaconnects.org](http://www.acaconnects.org)

**GRANT SPELLMEYER**  
PRESIDENT AND CEO  
GSPELLMEYER@ACACONNECTS.ORG

**BRIAN HURLEY**  
CHIEF REGULATORY COUNSEL  
BHURLEY@ACACONNECTS.ORG



[www.cartesian.com](http://www.cartesian.com)

**MICHAEL DARGUE**  
VICE PRESIDENT  
MICHAEL.DARGUE@CARTESIAN.COM

**SAMUEL KORNSTEIN**  
MANAGING DIRECTOR  
SAMUEL.KORNSTEIN@CARTESIAN.COM