

BEAD Program: A Framework to Allocate Funding for Broadband Availability

State Broadband Report: Florida

January 2024





1 Eligible Locations

How many unserved/underserved locations are eligible for BEAD funding?

5%
381K LOCATIONS
OF FLORIDA LOCATIONS LACK HIGH-SPEED BROADBAND IN JUN 2023
VS. 9% STATE/TERRITORY AVERAGE

UNSERVED LOCATIONS, JUN. 2024



165.4K
LOCATIONS

Are estimated to lack broadband access at 25/3 Mbps

UNDERSERVED LOCATIONS, JUN. 2024



111.8K
LOCATIONS

Are estimated to lack broadband access at 100/20 Mbps

These locations are primarily in rural areas and are eligible for BEAD funding to deploy broadband service.

2 Total Funding

How much capital funding is the State/Territory estimated to have?

\$1.2B
IN BEAD FUNDING HAS BEEN ALLOCATED TO FLORIDA
VS. \$743M STATE/TERRITORY AVERAGE

ESTIMATED BEAD FUNDING:

BEAD Funds allocated by NTIA

\$1.2B

Estimated Provider Match

\$710M

Estimated Total Capital

\$1.9B

The provider match is estimated using a high-level service provider business case. See national summary deck for full details.

3 Deployment

How many locations can be covered with fiber and other technologies?

\$588M-\$847M
OF BEAD FUNDS IS REQUIRED TO BUILD HIGH-SPEED BROADBAND TO ALL ELIGIBLE LOCATIONS

DEPLOYMENT SCENARIOS:



Baseline Fiber



Maximum Fiber

100%
LOCATIONS REACHED

93%
FIBER LOCATIONS

100%
LOCATIONS REACHED

100%
FIBER LOCATIONS

\$1.3B
TOTAL CAPITAL COST

\$1.6B
TOTAL CAPITAL COST

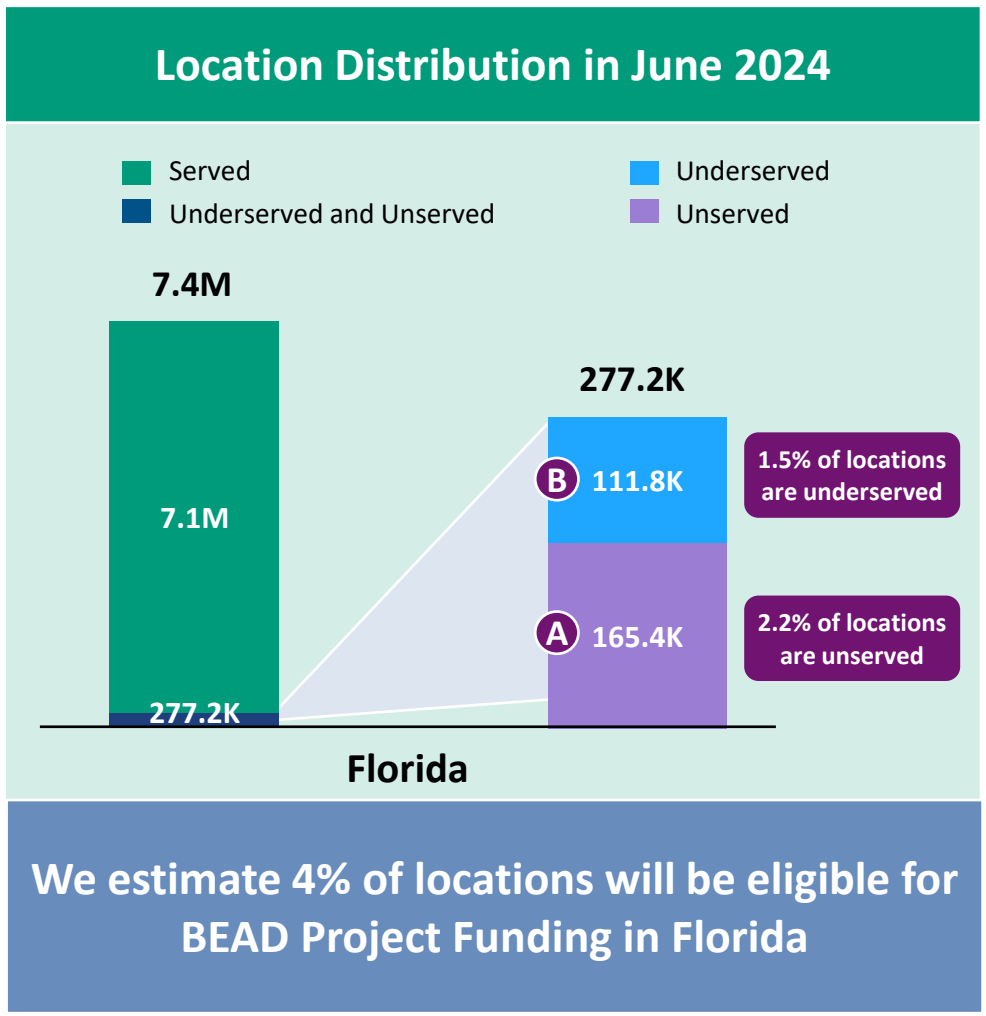
\$582M
REMAINING BUDGET

\$323M
REMAINING BUDGET

1 Estimate Eligible Locations

Florida | Estimated Eligible Locations for BEAD Projects

June 2023 FCC Broadband Locations	Unserved <i>(less than 25Mbps/3Mbps)</i>	Underserved <i>(less than 100Mbps/20Mbps)</i>
Subsidy Program Funded Locations ¹	68.5K	11.1K
Incremental Build ² <i>(13% annual build, for 12 months)</i>	24.7K	--
Jun. 2024 Estimated Eligible Locations	165.4K (A)	111.8K (B)

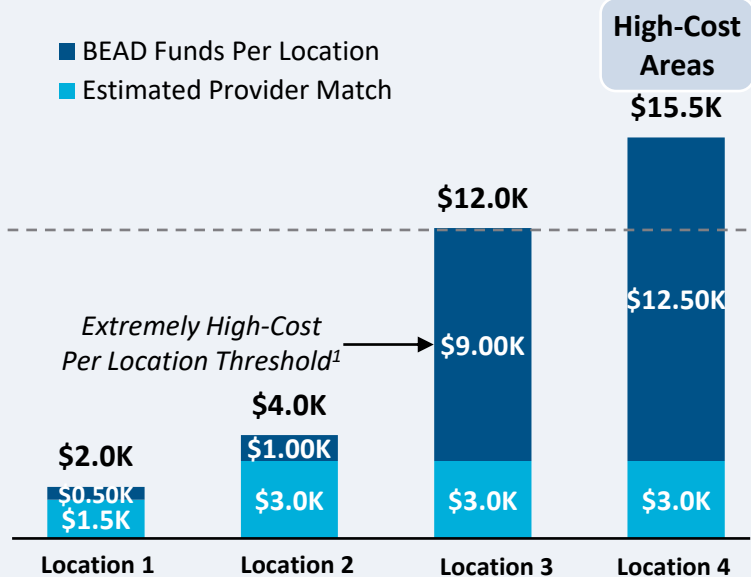


1. Locations with "commitments" to receive support from federal subsidy programs
 2. Given the uncertainty around the magnitude of locations moving from unserved to underserved, we have not made incremental builds adjustments to underserved locations
 BEAD eligible locations does not account for state-specific eligibility rules set forth in Initial Proposals
 Source: Cartesian, FCC National Broadband Map (June 2023 data, released in November 2023)
 Confidential and Proprietary — Copyright © 2024 Cartesian, Inc. All rights reserved.

Provider Match Examples

Total Deployment Cost per Location

- BEAD Funds Per Location
- Estimated Provider Match

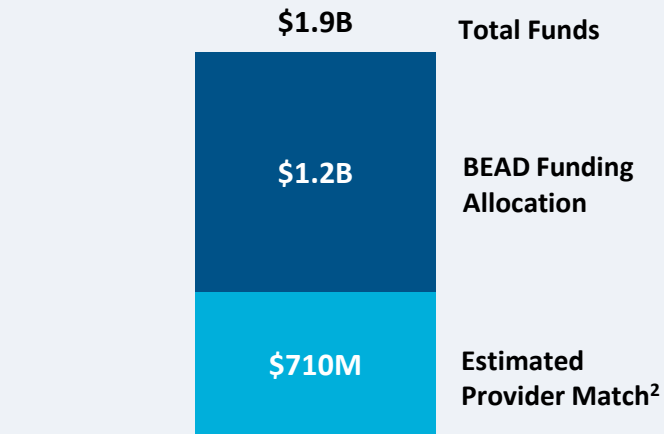


Provider Match %

75%	75%	25%	19%
-----	-----	-----	-----

To be conservative, we assume provider match amounts have a maximum of 75% and a minimum of 25%, except in high-cost areas

Total Capital Available - Florida



\$1.9B in total capital is estimated to be available to serve unserved/underserved Florida locations (combining BEAD funding and estimated provider match)

Provider Match - Florida

Total Estimated
Provider Match:

\$710M

Total Estimated
Eligible Locations:

277.2K

Average
Provider Match:

\$2,563
PER LOCATION

We estimate the average provider match will be \$2,563 – provider matches will be 75% where cost to deploy is less than \$4K

1. The model uses a \$9k threshold, however, States/Territories will individually need to determine their appropriate extremely high-cost threshold

2. In reality, providers will determine the viable level of match funding for each project using a business case model. They will be willing to contribute a greater match in some locations and less in others. Locations which are hardest to serve may need to be fully funded by BEAD with no match. Competitive bidding should drive provider matches towards this level.

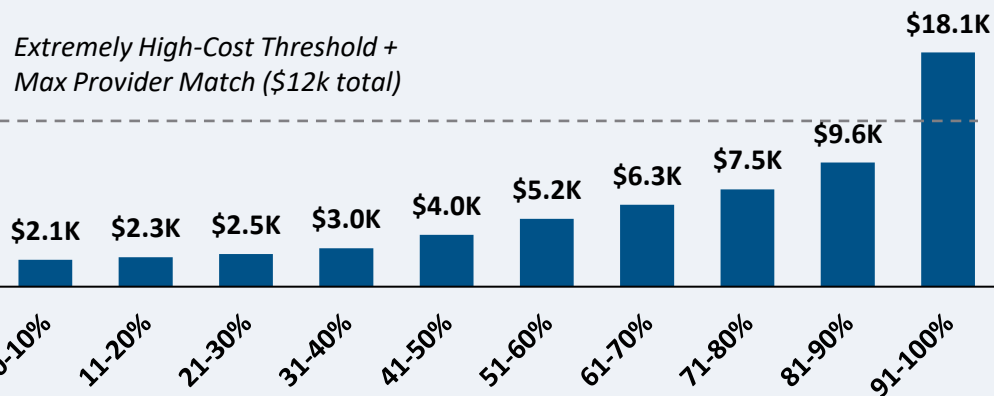
Source: Cartesian, FCC National Broadband Map (June 2023 data, released in November 2023), Benton, NTIA

Confidential and Proprietary — Copyright © 2024 Cartesian, Inc. All rights reserved.

CAPEX Fiber Deployment Cost per Location Segmented by Cost Deciles¹

Unserved Locations

Overall Average Cost per Location: \$6,088



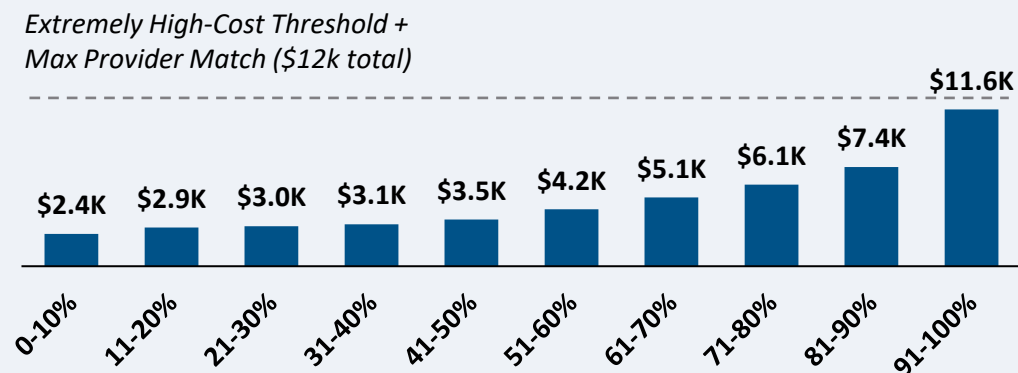
Average Tract Density (Location per sq. Mile)

83	33	30	43	33	32	33	24	22	11
----	----	----	----	----	----	----	----	----	----

165.4K Locations

Underserved Locations

Overall Average Cost per Location: \$4,926



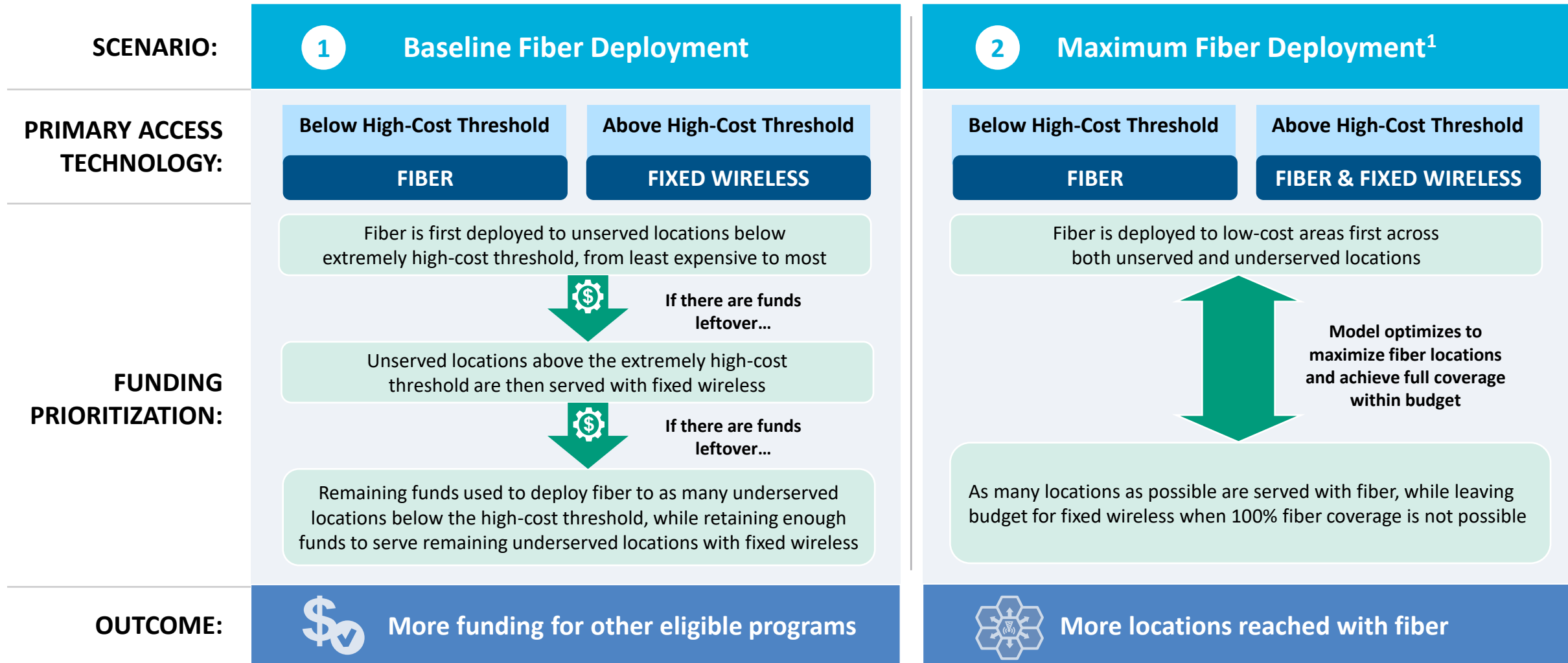
Average Tract Density (Location per sq. Mile)

159	37	36	43	21	35	24	26	10	12
-----	----	----	----	----	----	----	----	----	----

111.8K Locations

Over 90% of locations are estimated to fall below the High-Cost Threshold + Provider Match

Florida | Fiber Preferencing Scenarios



1. Scenario 2 deploys fiber beyond the extremely high-cost threshold
 Source: Cartesian
 Confidential and Proprietary — Copyright © 2024 Cartesian, Inc. All rights reserved.

3 Develop Deployment Scenarios

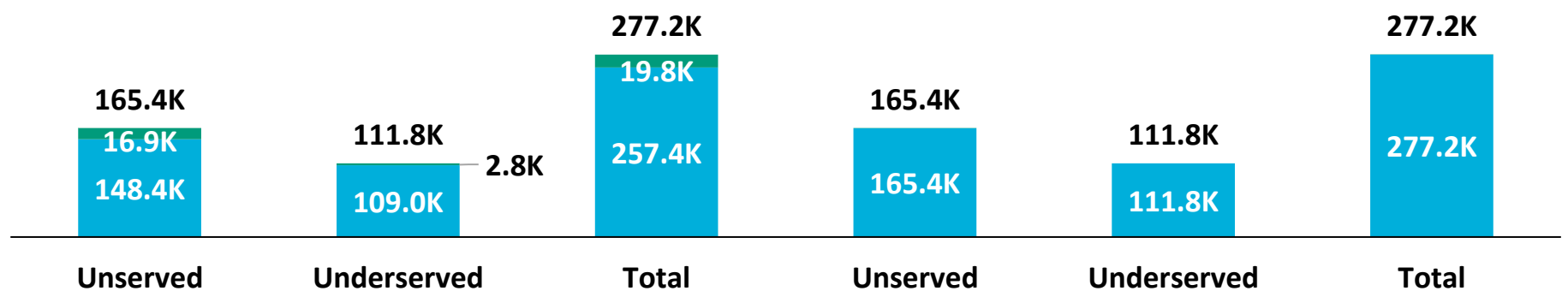
Florida | Scenario Analysis Results

SCENARIO:

1 Baseline Fiber Deployment

2 Maximum Fiber Deployment

■ Fixed Wireless
■ Fiber



	Scenario 1	Scenario 2
Capex Required per Locations ¹	\$4,736	\$6,088
BEAD Funds Available to State	\$1.2B	\$1.2B
+ Estimated Provider Match	\$710M	\$710M
= Total Available Capital	\$1.9B	\$1.9B
- Capex Required to Build	\$1.3B	\$1.6B
= Remaining Funds	\$582M	\$323M
% of Locations Reached	100%	100%
% of Locations Reached with Fiber	93%	100%

1. Funding to deploy fiber before the maximum \$3k provider match per location
 Source: Cartesian, FCC National Broadband Map (June 2023 data, released in November 2023), Benton, NTIA
 Confidential and Proprietary — Copyright © 2024 Cartesian, Inc. All rights reserved.





Funding Summary

Florida is expected to receive

\$1.2B in BEAD funding



\$710M in estimated provider matching

We estimate the funding is sufficient to reach all of Florida's 277.2k eligible locations with high-speed broadband



Key Findings

Florida appears well positioned to reach all eligible premises and have funding for other BEAD eligible

A Baseline Fiber Deployment...



Maximizing Fiber...

- Leaves \$582M additional funds for affordability programs
- Reaches 93% of locations with fiber
- Requires 7% to be reached with other tech.

- Leaves \$323M additional funds for affordability programs
- Reaches 100% of locations with fiber
- Requires 0% to be reached with other tech.

States/Territories will set their own extremely high-cost threshold and may choose a threshold or funding paradigm different from these two scenarios

Florida | ACA Connects Members

Member Name
American Cable TV, Inc.
Atlantic Broadband
Cable One, Inc.
Consolidated Communications, Inc.
Home Town Cable TV, LLC
Hotwire Communications Ltd
Mediacom, LLC
Metronet
Oak Run Associates Ltd dba Decca Digital Solutions
Point Broadband, LLC
TDS Telecom
TPC Broadband Holdings, LLC
Valparaiso Broadband Communications
Wide Open West Networks, LLC



www.acaconnects.org

GRANT SPELLMEYER
PRESIDENT AND CEO
GSPELLMEYER@ACACONNECTS.ORG

BRIAN HURLEY
CHIEF REGULATORY COUNSEL
BHURLEY@ACACONNECTS.ORG



www.cartesian.com

MICHAEL DARGUE
VICE PRESIDENT
MICHAEL.DARGUE@CARTESIAN.COM

SAMUEL KORNSTEIN
MANAGING DIRECTOR
SAMUEL.KORNSTEIN@CARTESIAN.COM